

CORRECTION

Open Access



# Correction to: YM155 decreases radiation-induced invasion and reverses epithelial–mesenchymal transition by targeting STAT3 in glioblastoma

Xin Zhang<sup>1</sup>, Xuehai Wang<sup>2</sup>, Ran Xu<sup>1</sup>, Jianxiong Ji<sup>1</sup>, Yangyang Xu<sup>1</sup>, Mingzhi Han<sup>1</sup>, Yuzhen Wei<sup>1,3</sup>, Bin Huang<sup>1</sup>, Anjing Chen<sup>1</sup>, Qing Zhang<sup>1</sup>, Wenjie Li<sup>1</sup>, Jian Wang<sup>1,4</sup>, Xingang Li<sup>1</sup> and Chen Qiu<sup>5\*</sup>

**Correction to: J Transl Med (2018) 16:79**

<https://doi.org/10.1186/s12967-018-1451-5>

After publication of the original article [1], it was noticed that the images of WT (YM155+Radiation) in Fig. 5f and U251 (YM155+STAT3) in Fig. 5h were mistakenly duplicated. This error also affected supplementary figure 3.

The original and updated figures are published in this correction article.

The updated figures (Figs. 1, 2, 3, 4) do not change the validity of the scientific conclusion drawn in this paper.

The original article can be found online at <https://doi.org/10.1186/s12967-018-1451-5>.

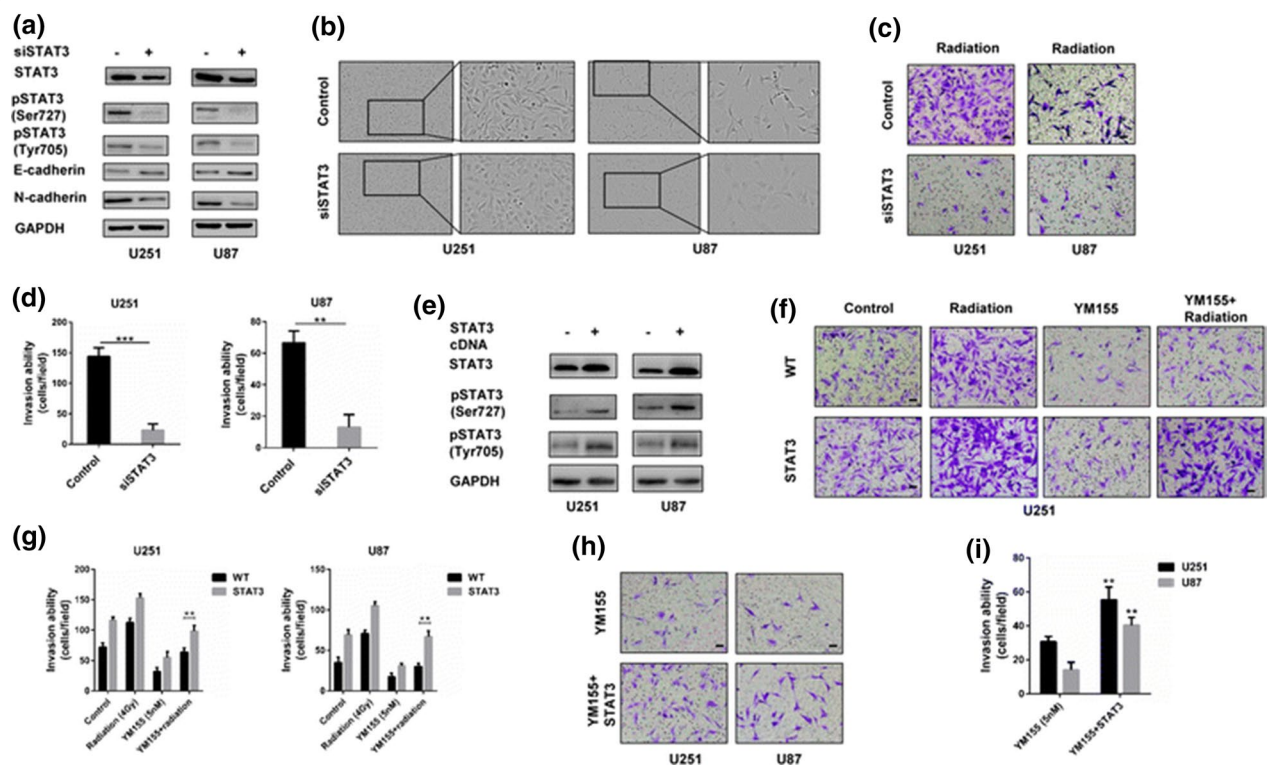
\*Correspondence: 18560088223@163.com

<sup>5</sup> Department of Radiation Oncology, Qilu Hospital of Shandong University, Jinan 250012, People's Republic of China

Full list of author information is available at the end of the article

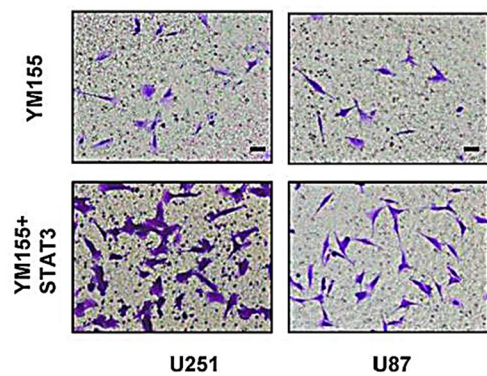


© The Author(s) 2021. **Open Access** This article is licensed under a Creative Commons Attribution 4.0 International License, which permits use, sharing, adaptation, distribution and reproduction in any medium or format, as long as you give appropriate credit to the original author(s) and the source, provide a link to the Creative Commons licence, and indicate if changes were made. The images or other third party material in this article are included in the article's Creative Commons licence, unless indicated otherwise in a credit line to the material. If material is not included in the article's Creative Commons licence and your intended use is not permitted by statutory regulation or exceeds the permitted use, you will need to obtain permission directly from the copyright holder. To view a copy of this licence, visit <http://creativecommons.org/licenses/by/4.0/>. The Creative Commons Public Domain Dedication waiver (<http://creativecommons.org/publicdomain/zero/1.0/>) applies to the data made available in this article, unless otherwise stated in a credit line to the data.

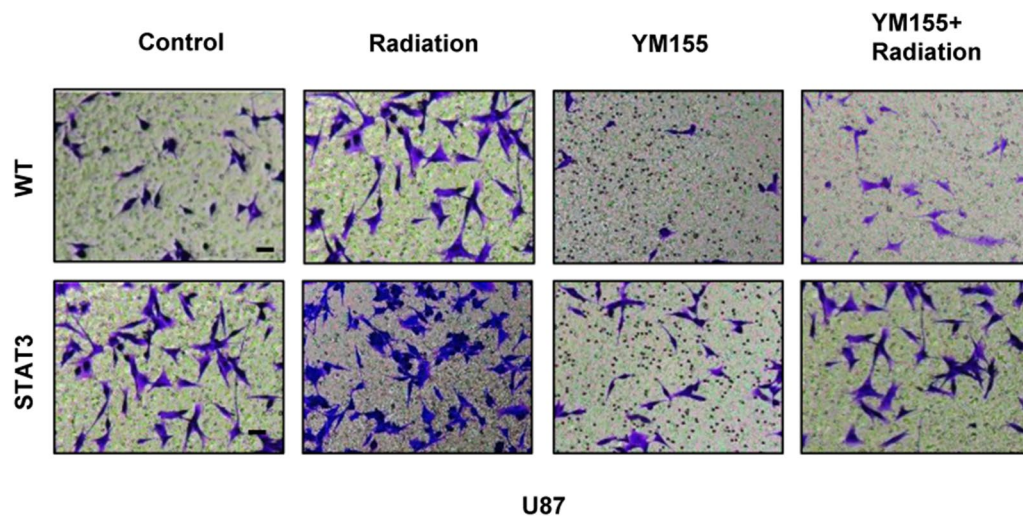


**Fig. 1** Original publication of figure 5h

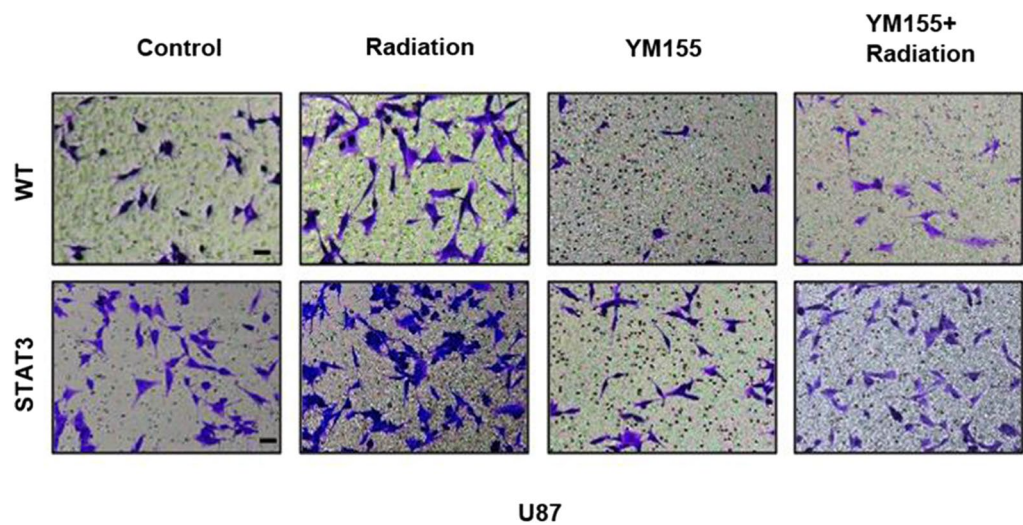
**h**



**Fig. 2** Updated figure 5h



**Fig. 3** Original publication of supplementary figure 3



**Fig. 4** Updated supplementary figure 3

**Author details**

<sup>1</sup>Department of Neurosurgery, Qilu Hospital of Shandong University and Brain Science Research Institute, Shandong University, Jinan 250012, People's Republic of China. <sup>2</sup>Department of Otolaryngology, Weihai Municipal Hospital, Weihai 264200, Shandong, People's Republic of China. <sup>3</sup>Department of Neurosurgery, Jining No. 1, People's Hospital, Jining 272011, China. <sup>4</sup>Department of Biomedicine, University of Bergen, 5009 Bergen, Norway. <sup>5</sup>Department of Radiation Oncology, Qilu Hospital of Shandong University, Jinan 250012, People's Republic of China.

Published online: 27 September 2021

**Reference**

1. Zhang X, Wang X, Xu R, Ji J, Xu Y, Han M, Wei Y, Huang B, Chen A, Zhang Q, Li W, Wang J, Li X, Qiu C. YM155 decreases radiation-induced invasion and reverses epithelial–mesenchymal transition by targeting STAT3 in glioblastoma. *J Transl Med*. 2018;16:79. <https://doi.org/10.1186/s12967-018-1451-5>.

**Publisher's Note**

Springer Nature remains neutral with regard to jurisdictional claims in published maps and institutional affiliations.

**Ready to submit your research? Choose BMC and benefit from:**

- fast, convenient online submission
- thorough peer review by experienced researchers in your field
- rapid publication on acceptance
- support for research data, including large and complex data types
- gold Open Access which fosters wider collaboration and increased citations
- maximum visibility for your research: over 100M website views per year

**At BMC, research is always in progress.**

Learn more [biomedcentral.com/submissions](https://biomedcentral.com/submissions)

