

RESEARCH

Open Access

# Protein kinase CK2 $\alpha$ is overexpressed in colorectal cancer and modulates cell proliferation and invasion via regulating EMT-related genes

Jinjin Zou<sup>1</sup>, Hesun Luo<sup>1</sup>, Qin Zeng<sup>1</sup>, Zhongyi Dong<sup>1</sup>, Dehua Wu<sup>1\*</sup> and Li Liu<sup>2\*</sup>

## Abstract

**Background:** Protein kinase CK2 is a highly conserved, ubiquitous protein serine/threonine kinase that phosphorylates many substrates and has a global role in numerous biological and pathological processes. Overexpression of the protein kinase CK2 $\alpha$  subunit (CK2 $\alpha$ ) has been associated with the malignant transformation of several tissues, with not nearly as much focus on the role of CK2 $\alpha$  in colorectal cancer (CRC). The aims of this study are to investigate the function and regulatory mechanism of CK2 $\alpha$  in CRC development.

**Methods:** Expression levels of CK2 $\alpha$  were analyzed in 144 patients (104 with CRC and 40 with colorectal adenoma) by immunohistochemistry. Proliferation, senescence, motility and invasion assays as well as immunofluorescence staining and western blots were performed to assess the effect of CK2 $\alpha$  in CRC.

**Results:** The immunohistochemical expression of nuclear CK2 $\alpha$  was stronger in tumor tissues than in adenomas and normal colorectal tissues. Suppression of CK2 $\alpha$  by small-interfering RNA or the CK2 $\alpha$  activity inhibitor emodin inhibited proliferation of CRC cells, caused G0/G1 phase arrest, induced cell senescence, elevated the expression of p53/p21 and decreased the expression of C-myc. We also found that knockdown of CK2 $\alpha$  suppressed cell motility and invasion. Significantly, CK2 $\alpha$  inhibition resulted in  $\beta$ -catenin transactivation, decreased the expression levels of vimentin and the transcription factors snail1 and smad2/3, and increased the expression of E-cadherin, suggesting that CK2 $\alpha$  regulates the epithelial-mesenchymal transition (EMT) process in cancer cells.

**Conclusions:** Our results indicate that CK2 $\alpha$  plays an essential role in the development of CRC, and inhibition of CK2 $\alpha$  may serve as a promising therapeutic strategy for human CRC.

## Introduction

Colorectal cancer (CRC) is the second-most common cause of cancer death in the West [1] and its incidence in China has increased rapidly during the past few decades [2]. Colorectal cancers can be divided into tumors exhibiting chromosomal instability and tumors exhibiting microsatellite instability [3,4]. In the last few years, molecular biology advances have led to a growing knowledge of the mechanisms underlying CRC development, including the mutational activation of oncogenes

and alteration of several tumor suppressor genes, such as adenomatous polyposis coli (APC), deleted in colorectal cancer (DCC) and p53 [5-8]. However, molecular markers that indicate the occurrence and development of CRC are still needed.

Protein kinase CK2 (formerly casein kinase II) has traditionally been classified as a messenger-independent protein serine/threonine kinase that is typically found in tetrameric complexes consisting of two catalytic ( $\alpha$  and/or  $\alpha'$ ) subunits and two regulatory  $\beta$  subunits [9]. To date, more than 300 CK2 substrates have been identified; one third of these are implicated in gene expression and protein synthesis as translational elements [10]. CK2 $\alpha$ -knockout mice are not viable because of defects in heart and neural tube development [11]. The disruption of CK2 $\alpha$  expression in *Saccharomyces cerevisiae* and knock-out of CK2 $\beta$  in mice are lethal events, indicating the

\* Correspondence: wudehua.gd@gmail.com; liliu.gd@gmail.com

<sup>1</sup>Department of Radiation Oncology, Nanfang Hospital, Southern Medical University, Guangzhou 510515, Guangdong Province, China

<sup>2</sup>Hepatology Unit and Department of Infectious Diseases, Nanfang Hospital, Southern Medical University, Guangzhou 510515, Guangdong Province, China

Full list of author information is available at the end of the article

importance of CK2 in the maintenance of cell viability during the normal cell life and embryogenesis [12,13]. CK2 $\alpha$  also participates in the regulation of various cell cycle stages, presumably through phosphorylation of the proteins associated with cell cycle progression [14]. Furthermore, CK2 involvement has been found in chromatin remodeling as well as protein transcription, translation, and degradation [15-17]. Recent studies suggest that CK2 creates an environment that is favorable for the development of the tumor phenotype [18].

In the present study, we assessed CK2 $\alpha$  expression in colorectal cancer, adenoma, and normal colorectal epithelium and found CK2 $\alpha$  involvement in CRC tumorigenesis. Moreover, the role of CK2 $\alpha$  in cell proliferation, senescence, motility and invasion was examined in CRC cell lines that were subjected to CK2 $\alpha$  knockdown or to the CK2 $\alpha$  activity inhibitor emodin. Further analysis was conducted to elucidate the mechanisms of CK2 $\alpha$  involvement in the occurrence and development of CRC.

## Materials and methods

### Patient characteristics

We obtained paraffin-embedded samples of 104 CRCs and 40 adenomas that were diagnosed on the basis of histological and clinical findings at the Nanfang Hospital between 2005 and 2007. Prior patient consent and approval from the Institute Research Ethics Committee were obtained before we used these clinical materials for research purposes. The CRC stage was defined according to the AJCC classification. The clinical characteristics of the patients with CRC are summarized in detail in Table 1. The tumors taken from the adenoma group (20 males and 20 females; age, 28 - 73 years [mean: 50.5]) consisted of 3 serrate adenomas, 22 canalicular adenomas, 9 villous adenomas, and 6 tubulovillous adenomas.

### Immunohistochemistry

Immunohistochemical staining was performed using a Dako Envision System (Dako, Carpinteria, CA, USA) following the manufacturer's recommended protocol. Briefly, all paraffin sections, 4  $\mu$ m in thickness, were heated for 1 h at 65°C, deparaffinized with xylene, rehydrated through a graded series of ethanol/distilled water concentrations, submerged in EDTA buffer (pH 8.0), heated in a microwave for antigen retrieval, treated with 0.3% H<sub>2</sub>O<sub>2</sub> for 15 min to block the endogenous peroxidase, incubated overnight with rabbit monoclonal anti-CK2 $\alpha$  antibody (1:50; Abcam, Cambridge, UK) at 4°C, washed, incubated with horseradish peroxidase (HRP) at 4°C for 30 min, and visualized with diaminobenzidine (DAB). For negative controls, the antibody was replaced by normal goat serum.

**Table 1 Clinicopathological characteristics of the 104 patients and expression of CK2 $\alpha$  in CRC.**

	N (%)
<b>Gender</b>	
Male	56 (53.8)
Female	48 (46.2)
<b>Age</b>	
$\geq 55$	54 (51.9)
<55	50 (48.1)
<b>Tumor location</b>	
Colon	53 (51.0)
Rectum	51 (49.0)
<b>T stage</b>	
T1-T2	49 (47.1)
T3-T4	55 (52.9)
<b>N stage</b>	
Nx-0	55 (52.9)
N1-2	49 (47.1)
<b>M stage</b>	
M0	60 (57.7)
M1	44 (42.3)
<b>TNM stage</b>	
I-II	30 (28.8)
III-IV	74 (71.2)
<b>Degree of differentiation</b>	
Well	35 (33.7)
Moderately	45 (43.3)
Poorly	24 (23.0)
<b>Expression of CK2<math>\alpha</math></b>	
Low expression	43 (41.3)
High expression	61 (58.7)

### Evaluation of staining

The immunohistochemically stained tissue sections were scored separately by two pathologists who were blinded to the clinical parameters. For assessment of CK2 $\alpha$ , the entire tissue section was scanned before assigning the scores. The staining intensity was scored as 0 (negative), 1 (weak), 2 (medium), or 3 (strong). The extent of staining was scored as 0 (0%), 1 (1 - 25%), 2 (26 - 50%), 3 (51 - 75%), or 4 (76 - 100%), according to the percentages of the positive staining areas relative to the entire carcinoma-involved area or, for the normal samples, the entire section. The sum of the intensity and extent scores was used as the final CK2 $\alpha$  staining score (0 - 7). This relatively simple, reproducible scoring method gives highly concordant results between independent evaluators and has been used in previous studies [19,20]. For the purpose of statistical evaluation, tumors with a final staining score of  $\geq 3$  were considered to be positive for CK2 $\alpha$ .

### Cell lines and culture conditions

The human colorectal cancer cell lines LoVo, SW480, HT29, HCT116 and LS174T were maintained in RPMI 1640 (Gibco, Grand Island, NY, USA) supplemented with 10% fetal bovine serum at 37°C in a 5% CO<sub>2</sub> humidified incubator.

### CK2 $\alpha$ siRNA

Cells were seeded onto a six-well plate 16 h before transfection. In each well, 100 pmol of CK2 $\alpha$  siRNA (CSNK2A1 siRNA: 5'-GAUGACUACCAGCUGGUUC-3') or scramble sequences and 5  $\mu$ l of Lipofectamine 2000 (Invitrogen, Carlsbad, CA, USA) were added to Opti-MEM medium and mixed gently. The plate was incubated for 48 h until it was ready for further assay.

### Western blot analysis

Cells and tissues were washed twice with cold phosphate-buffered saline (PBS) and lysed on ice in RIPA buffer (1  $\times$  PBS, 1% NP40, 0.1% SDS, 5 mM EDTA, 0.5% sodium deoxycholate, and 1 mM sodium orthovanadate) with protease inhibitors. Whole extracts were resolved on 10% SDS polyacrylamide gels and electrotransferred to polyvinylidene fluoride (PVDF; Immobilon P; Millipore, Bedford, MA, USA) membranes, which were then blocked in 5% non-fat dry milk in Tris-buffered saline (TBST) (pH 7.5; 100 mM NaCl, 50 mM Tris, and 0.1% Tween-20) and immunoblotted with rabbit anti-CK2 $\alpha$  monoclonal antibody (1:800; Abcam), mouse anti-E-cadherin (1:500; Santa Cruz Biotechnology, Santa Cruz, CA, USA), anti- $\beta$ -catenin (1:500; Santa Cruz), mouse anti-vimentin (1:500; Santa Cruz), mouse anti-C-myc (1:200; Santa Cruz), mouse anti-p53 (1:200; Santa Cruz), mouse anti-p21 (1:200; Santa Cruz), mouse anti-GAPDH monoclonal antibody (1:1000; Santa Cruz), rabbit anti-snail1 (1:750; Bioworld Technology, St. Louis Park, MN, USA), or rabbit anti-smad2/3 (1:750; Cell Signaling Technology, Beverly, MA, USA) overnight at 4°C, followed by their respective secondary antibodies conjugated to horseradish peroxidase (HRP). The signals were detected by enhanced chemiluminescence (ECL; Pierce, Rockford, IL, USA). The images were analyzed by Image J software.

### Immunofluorescence staining

Cells were cultured on coverslips overnight, fixed with 4% paraformaldehyde for 20 min, treated with 0.25% Triton X-100 for 10 min, blocked in 10% normal blocking serum at room temperature for 10 min, incubated with mouse monoclonal anti- $\beta$ -catenin (1:50; Santa Cruz) at 4°C overnight, washed with PBS three times, incubated with TRITC (teramethylrhodamine-6-thiocarbamoyl)-conjugated anti-mouse secondary antibodies (Invitrogen, Carlsbad, CA, USA) for 30 min at room

temperature, and stained with 4,6-diamidino-2-phenylindole (DAPI; Invitrogen).

### In vitro cell growth assay

The cells were prepared at a concentration of  $1 \times 10^4$  cells/ml. Aliquots (100  $\mu$ l) were dispensed into 96-well microtiter plates. The cells were incubated for 1, 2, 3, 4, 5, or 6 days, and the 3-(4,5-dimethylthiazol-2-yl)-2,5-diphenyltetrazolium bromide (MTT) assay was performed by adding 20  $\mu$ l of MTT (5 mg/ml; Promega, Madison, WI, USA) for 4 hours. When the MTT incubation was complete, the supernatants were removed. Dimethyl sulfoxide (Sigma, St. Louis, MO, USA) was added to each well (150  $\mu$ l). Fifteen minutes later, the absorbance (OD) of each well was measured with a microplate reader set at 570 nm.

### Colony formation assay

Approximately  $1 \times 10^2$  cells from each treatment group were seeded in triplicate wells (3 cm in diameter) of a six-well culture plate, incubated at 37°C for 12 days, washed twice with PBS, and stained with Giemsa solution. The number of colonies containing more than 50 cells was counted under a microscope.

### Senescence-associated $\beta$ -galactosidase staining

Cells were seeded in triplicate on 12-well plates, fixed with 4% paraformaldehyde for 30 min, and stained with senescence-associated  $\beta$ -galactosidase (SA- $\beta$ -gal) solution (Invitrogen). The numbers of blue-stained (SA- $\beta$ -gal-positive) and total cells were manually counted under a microscope and averaged for three regions per sample well. The percentage of SA- $\beta$ -gal-positive cells was calculated accordingly.

### Flow cytometry assay

Cells were harvested at an exponential growth phase, and single-cell suspensions containing  $1 \times 10^6$  cells were fixed with 70% alcohol. The cell cycle was monitored using propidium iodide (PI) staining of nuclei. The fluorescence of DNA-bound PI in cells was measured with a FACScan flow cytometer (BD Biosciences), and the results were analyzed with ModFit 3.0 software (Verity Software House, Topsham, ME).

### Wound migration assay

Monolayers were wounded by scraping with a 200- $\mu$ l pipette tip. Scratches were monitored for the percentage of wound closure over the next 24 h. The wound was measured in 12 places located at preset distances and averaged. Wound healing was quantified, and statistical analysis was conducted relative to the control siRNA.

### Tumor cell invasion assay

Warm serum-free medium was added to the top chamber of the cell invasion chamber (Chemicon, Temecula, CA, USA) to rehydrate the ECM layer for 2 h at room temperature. Tumor cells in serum-free medium (300  $\mu$ l containing  $1 \times 10^5$  cells) were added to the top chamber. The bottom chamber was prepared with 10% FBS as a chemoattractant. After 18 h of incubation, noninvasive cells were removed with a cotton swab. The cells that had migrated through and adhered to the lower surface of the membrane were fixed with methanol, stained with hematoxylin, and counted under a microscope in five randomly selected fields at  $\times 200$  magnifications.

### Statistical analysis

All statistical analyses were carried out using the SPSS statistical software package, version 13.0 (SPSS, Chicago, IL, USA). A chi-squared test was used to analyze the differential expression of CK2 $\alpha$  in colorectal cancers, adenomas and adjacent normal colorectal mucosa. The Mann-Whitney *U*-test and Kruskal-Wallis *H*-test were used to analyze the relationship between CK2 $\alpha$  expression and gender, age, tumor location, degree of differentiation, T stage, N stage, M stage, and clinical stage. Paired *t*-tests, Student's *t*-tests, factorial analysis and one-way ANOVA were used to analyze the findings of the *in vitro* cell assay. A *P* value of less than 0.05 was considered statistically significant.

## Results

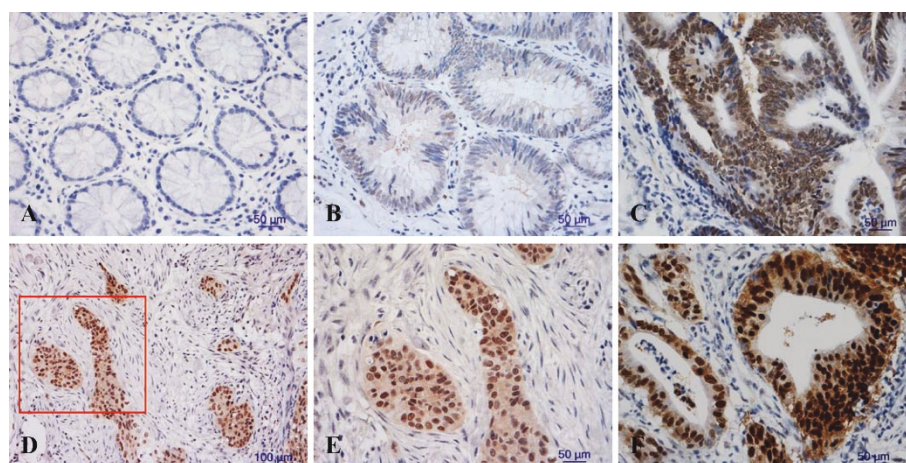
### CK2 $\alpha$ is overexpressed in colorectal cancer

CK2 $\alpha$  protein expression was analyzed in 144 patients (104 with CRC and 40 with colorectal adenoma). Staining for CK2 $\alpha$  was nearly negative in all of the normal

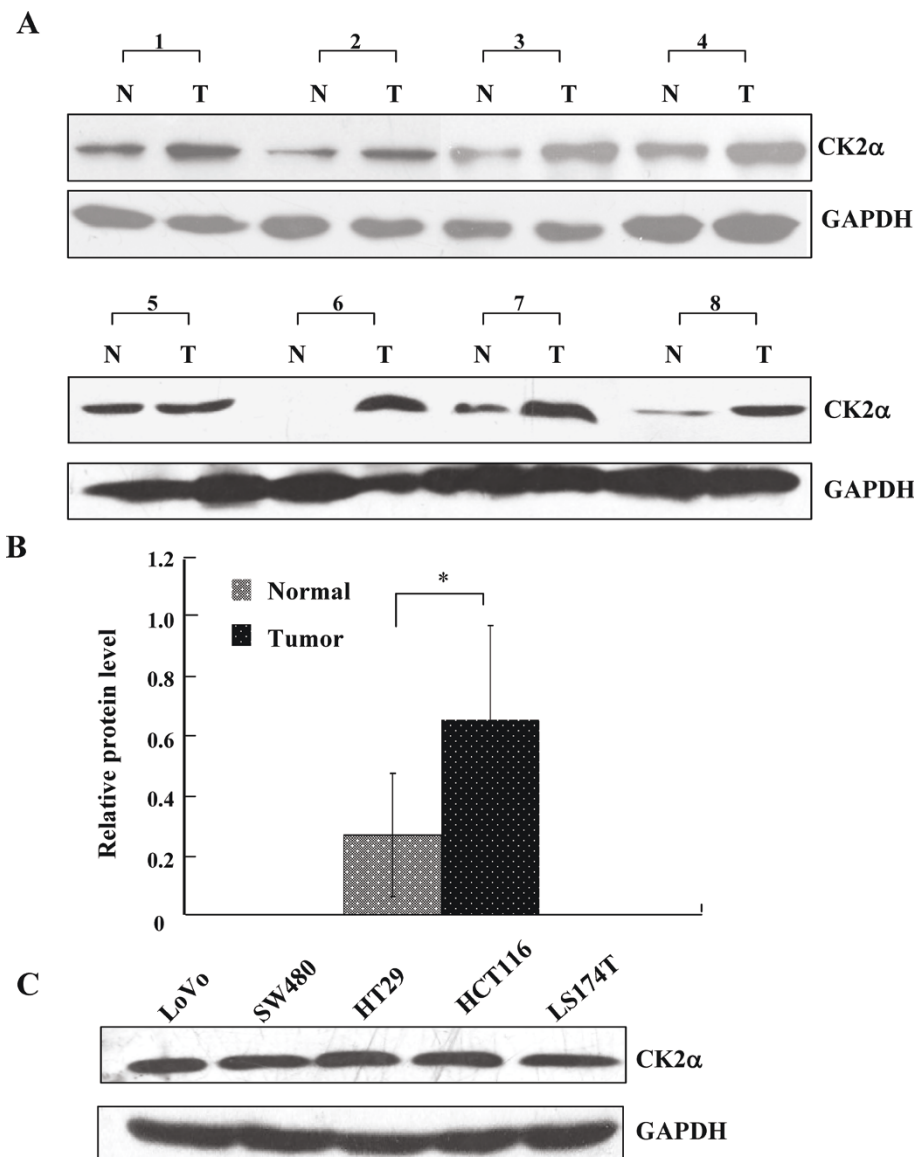
colorectal epithelium samples (Figure 1A), and nuclear staining for CK2 $\alpha$  was extremely weak in only 11 normal colorectal epithelium samples (11 of 86, 12.8%), positive in 17 of 40 (42.5%) colorectal adenoma samples (Figure 1B, C), and positive in 61 of 104 (58.7%) CRC samples (Figure 1D, E, F). CK2 $\alpha$  immunoexpression was much stronger in CRC than in adenomas, while its expression was greater in adenomas than in normal colorectal epithelium ( $\chi^2 = 42.035$ ,  $P < 0.05$ ). These data indicate that CK2 $\alpha$  may have a role in the process of CRC tumorigenesis. We also assessed CK2 $\alpha$  expression in 8 normal-CRC tissue pairs by western blot. Similar to the result in our immunohistochemistry assay, CK2 $\alpha$  expression was significantly higher in colorectal tumor tissues than in normal colorectal tissues (Figure 2A, B) ( $P < 0.01$ ). In addition, CK2 $\alpha$  was expressed in five CRC cell lines (Figure 2C).

### CK2 $\alpha$ overexpression is correlated with T classification in colorectal cancer

Next, we investigated the association between CK2 $\alpha$  expression and the clinicopathological characteristics of CRC cases and found that CK2 $\alpha$  overexpression was significantly associated with T classification ( $P = 0.002$ ). The expression of the CK2 $\alpha$  protein in CRC in the T3-T4 stage was significantly higher than in the T1-T2 stage. However, no significant correlation was found between CK2 $\alpha$  expression and gender, age, degree of differentiation, N classification, distant metastasis, or location (Table 2) ( $P > 0.05$ ). Because T describes how far the main (primary) tumor has grown into the wall of the intestine and whether it has grown into nearby areas, we speculated that CK2 $\alpha$  may participate in CRC cell invasion.



**Figure 1** Immunohistochemical detection of CK2 $\alpha$  expression in colorectal cancers, adenomas and adjacent normal colorectal mucosa. Staining was (A) negative in normal colorectal epithelium cells, (B, C) weak to moderate in the nuclei of colorectal adenoma cells, (D, E, F) and strong in the nuclei of colorectal cancer cells. (E is a close-up of the inset in D [framed in red]). Original magnification:  $\times 200$  (D),  $\times 400$  (A, B, C, E, F).



**Figure 2** CK2 $\alpha$  protein expression in CRC tissues and cell lines. (A) Western blot analysis of CK2 $\alpha$  expression in eight pairs of CRC tissues and adjacent, normal colorectal mucosa tissues. N: normal colorectal mucosa tissue; T: tumor tissue. (B) Quantitative analysis of CK2 $\alpha$  protein expression in eight pairs of CRC tissues and adjacent normal colorectal mucosa tissues. Columns, mean CK2 $\alpha$  protein level after normalizing the data to GAPDH expression; bars, SD. \* $P < 0.01$ . (C) Western blot was used to detect CK2 $\alpha$  expression in five CRC cell lines. GAPDH expression was used as a loading control.

### CK2 $\alpha$ regulates growth, proliferation and senescence of CRC cell lines

Because the process of tumorigenesis is closely correlated with eternal proliferation of tumor cells, we determined whether CK2 $\alpha$  expression plays a role in human CRC cell growth and proliferation using siRNA to knock down CK2 $\alpha$  expression or emodin to inhibit CK2 $\alpha$  activity (Figure 3A). The MTT assay showed that knockdown of CK2 $\alpha$  significantly decreased CRC cell proliferation compared to the control (nonspecific siRNA) ( $F = 32.854$ ,  $P < 0.01$  for LoVo cells;  $F = 32.655$ ,

$P < 0.01$  for SW480 cells), and treatment with emodin markedly reduced proliferation ( $F = 33.290$ ,  $P < 0.01$  for LoVo cells;  $F = 57.052$ ,  $P < 0.01$  for SW480 cells; Figure 3B). Furthermore, in the colony formation assay, inhibition of CK2 $\alpha$  expression dramatically decreased the number of CRC colonies ( $t = 20.252$ ,  $P < 0.01$  for LoVo cells;  $t = 12.034$ ,  $P < 0.01$  for SW480 cells; Figure 3C) and promoted CRC cell senescence ( $t = 43.052$ ,  $P < 0.01$ ; Figure 3D). Taken together, the results indicate that CK2 $\alpha$  plays a very important role in human CRC cell proliferation and senescence. CK2 $\alpha$  knockdown or

**Table 2 Correlation between the clinicopathological features and expression of the CK2 $\alpha$  protein.**

Characteristics	N	CK2 $\alpha$ (%)		P
		Low expression	High expression	
<b>Gender</b>				0.646
Male	56	22 (39.3)	34 (60.7)	
Female	48	21 (43.8)	27 (56.2)	
<b>Age</b>				0.897
$\geq 55$ y	54	22 (40.7)	32 (59.3)	
$< 55$ y	50	21 (42.0)	29 (58.0)	
<b>Tumor location</b>				0.554
Colon	53	21 (39.6)	32 (60.4)	
Rectum	51	22 (43.1)	29 (56.9)	
<b>T stage</b>				0.002*
T1-T2	49	21 (42.9)	28 (57.1)	
T3-T4	55	15 (27.2)	40 (72.7)	
<b>N stage</b>				0.515
Nx-0	55	20 (36.4)	35 (63.6)	
N1-2	49	23 (46.9)	26 (53.1)	
<b>M stage</b>				0.632
M0	60	26 (43.3)	34 (56.7)	
M1	44	17 (38.6)	27 (61.4)	
<b>TNM stage</b>				0.539
I-II	30	11 (36.7)	19 (63.7)	
III-IV	74	32 (43.2)	42 (56.8)	
<b>Degree of differentiation</b>				0.632
Well	35	13 (37.1)	22 (62.9)	
Moderately	45	21 (46.7)	24 (53.3)	
Poorly	24	9 (37.5)	15 (62.5)	

\*Statistically significant difference.

depression visibly inhibited cell proliferation and promoted cell senescence.

After CK2 $\alpha$  knockdown, the percentage of G0/G1 phase cells significantly increased ( $t = -9.577$ ,  $P < 0.01$ ), and the percent of S phase cells significantly decreased ( $t = 8.749$ ,  $P < 0.01$ ; Figure 4A, B), indicating that CK2 $\alpha$  knockdown induced G0/G1 phase arrest. Moreover, CK2 $\alpha$  knockdown increased endogenous p53 and p21 expression and decreased endogenous C-myc expression (Figure 4C). Thus, it can be inferred that the inhibition of cell proliferation and cell cycle arrest in CK2 $\alpha$  knockdown cells are associated with alterations in p53, p21 and C-myc expression.

#### CK2 $\alpha$ knockdown inhibits cell migration and invasion

Migration and matrigel invasion assays were performed to examine the effect of CK2 $\alpha$  on tumor cell migration and invasion, respectively. Knockdown of CK2 $\alpha$  greatly inhibited wound closure ( $F = 53.517$ ,  $P < 0.01$  for LoVo cells;  $F = 40.319$ ,  $P < 0.01$  for SW480 cells; Figure 5A) and invasion ( $t = 5.955$ ,  $P < 0.01$  for LoVo cells;  $t =$

4.339,  $P < 0.05$  for SW480 cells; Figure 5B). Accordingly, CK2 $\alpha$  was positively correlated with CRC cell migration and invasion ability.

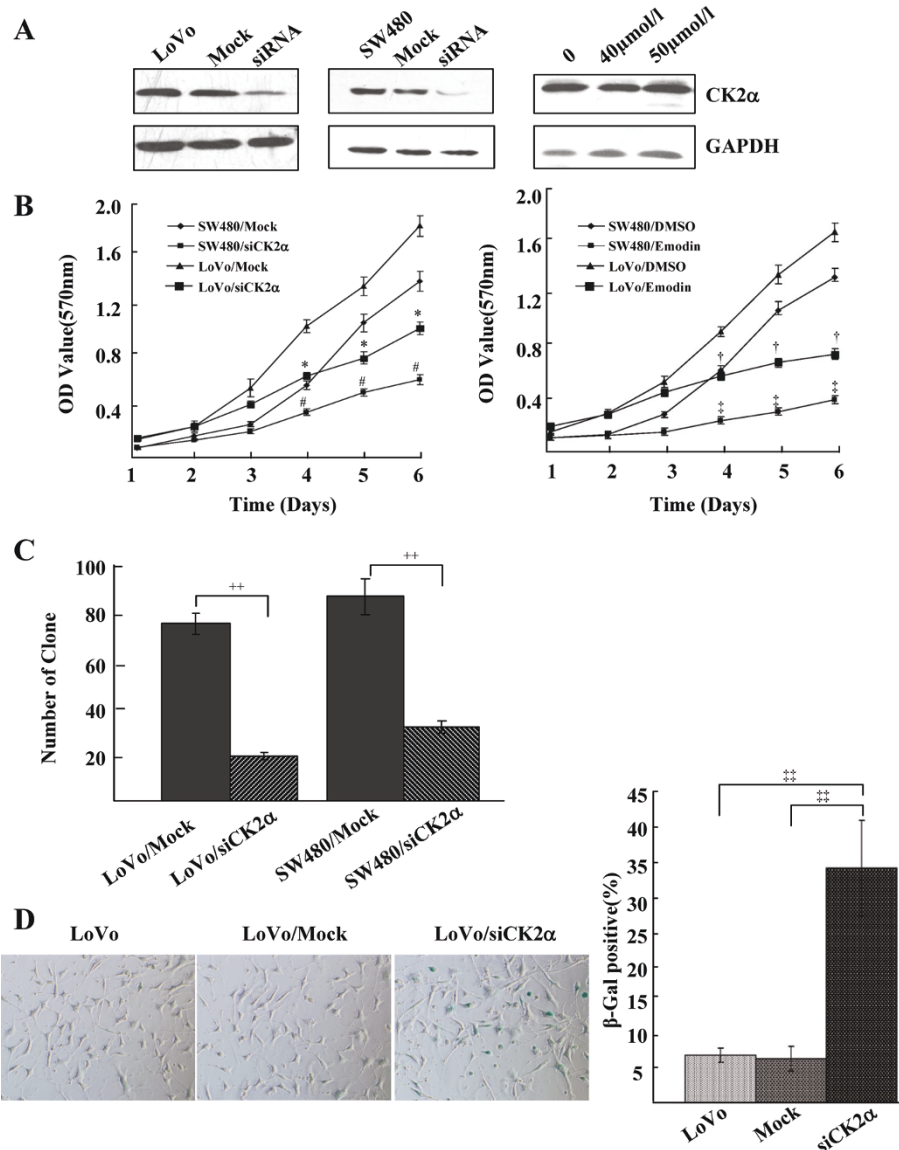
#### CK2 $\alpha$ knockdown reversed nuclear translocation of $\beta$ -catenin and altered the expression of E-cadherin and vimentin, in association with repression of the transcription factors snail1 and smad2/3 expression

Knockdown of CK2 $\alpha$  reversed the cytoplasmic-to-nuclear transfer of  $\beta$ -catenin resulted by EGF stimuli (Figure 6A). We also measured the expression levels of EMT-related genes by analyzing western blots. Cells transfected with CK2 $\alpha$  siRNA had dramatically reduced levels of endogenous CK2 $\alpha$  and increased levels of E-cadherin, an epithelial marker; there was no effect on the  $\beta$ -catenin expression level and a decreased level of vimentin, a mesenchymal marker. In addition, knockdown of CK2 $\alpha$  decreased the expression of the transcription factors snail1 and smad2/3 (Figure 6B). The results show that CK2 $\alpha$  knockdown represses EMT in CRC. We also treated cells with emodin and found that CK2 $\alpha$  activity, but not protein expression, was affected. Emodin increased the expression of E-cadherin, had no effect on the expression of  $\beta$ -catenin, and decreased the expression of vimentin in a concentration-dependent manner (Figure 6C). Thus, depression of CK2 $\alpha$  activity can inhibit the expression of EMT-related genes, suggesting that an increase in CK2 $\alpha$  protein or activity may facilitate EMT and thus plays an important role in colorectal cancer invasion.

#### Discussion

In this present study, we assessed CK2 $\alpha$  expression in colorectal cancer, adenoma and normal colorectal epithelium and found that CK2 $\alpha$  was overexpressed in CRC. Consistent with a recent study by Lin et al. [21], our findings convincingly demonstrate that CK2 $\alpha$  was significantly upregulated in CRC. Our study further showed that CK2 $\alpha$  protein expression levels were increased in both CRC and colorectal adenoma, and CK2 $\alpha$  expression was much higher in CRC than in adenoma, suggesting that CK2 $\alpha$  may be involved in the progression from adenoma to CRC. In addition, we found that CK2 $\alpha$  overexpression was only associated with T classification, but there were no significant correlations with other clinical characteristics, possibly due to our relatively small sample size.

Several studies have shown that the dysregulation of CK2 enhances tumor cell survival [22,23], but the function of CK2 $\alpha$  in CRC is less well known. In our study, we assessed the role of CK2 $\alpha$  in the biological behavior of CRC. As in a recent study [21], we found that CK2 $\alpha$  knockdown inhibited cell proliferation and colon formation in other CRC cell lines. Moreover, for the first

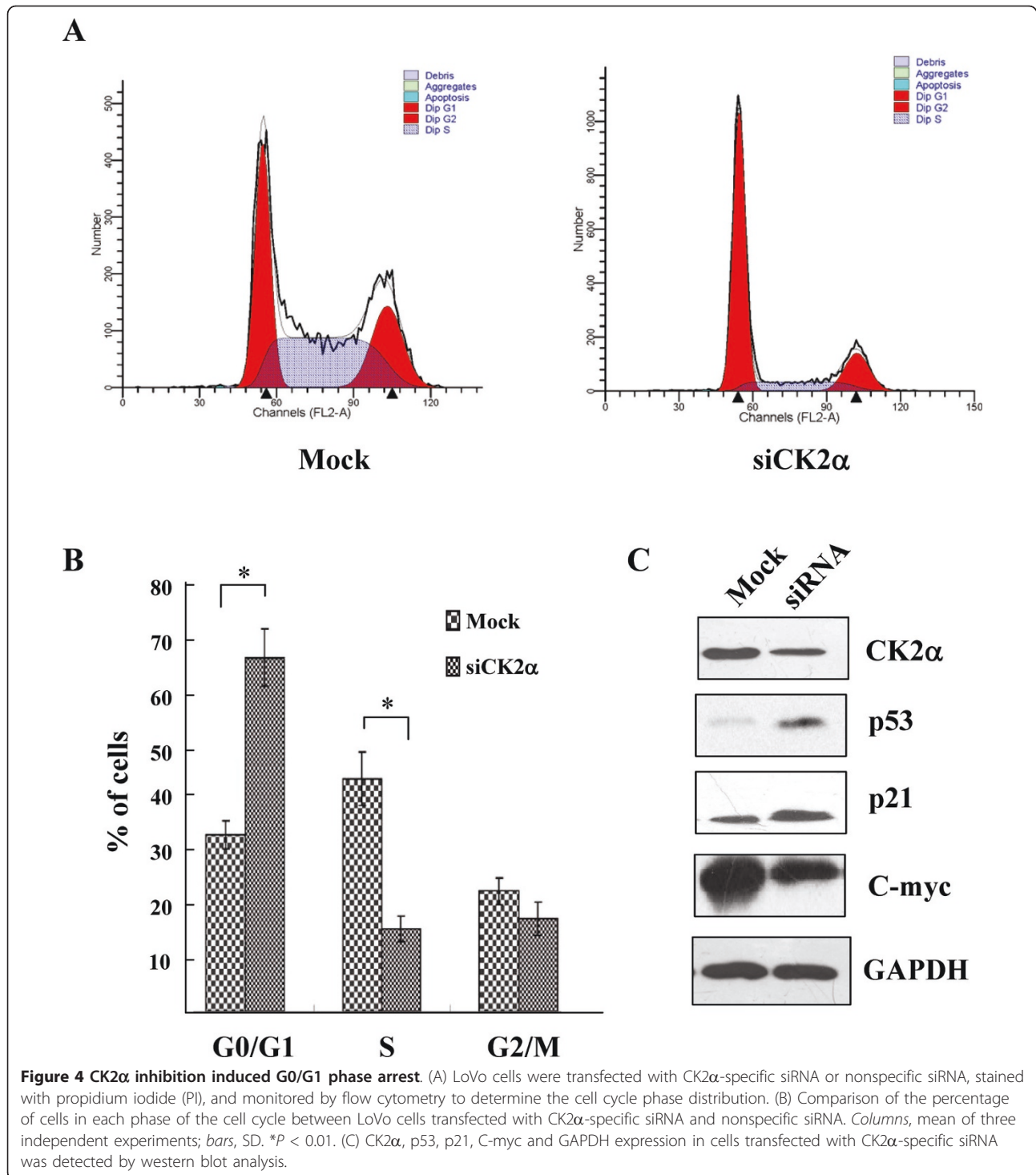


**Figure 3** Knockdown of CK2α inhibited cell proliferation and promoted cell senescence of CRC cell lines. (A) Western blot analysis of CK2α protein in lysates of cells transfected with a specific CK2α siRNA or treated with emodin. GAPDH expression was used as a loading control. (B) MTT assay of the proliferating cells transfected with a CK2α-specific siRNA or a nonspecific siRNA and treated with emodin. Points, mean of three independent experiments; bars, SD. \* $P < 0.01$  versus LoVo/Mock; # $P < 0.01$  versus SW480/Mock; † $P < 0.01$  versus LoVo/DMSO; ‡ $P < 0.01$  versus SW480/DMSO. (C) The number of colonies formed from cells transfected with CK2α siRNA. Colonies were stained with crystal violet and counted. Columns, mean of three independent experiments; bars, SD. ++ $P < 0.01$ . (D) The number of SA-β-gal-positive cells (green) 48 h after transfection with CK2α siRNA. Cells were stained with SA-β-gal staining solution. Columns, mean of three independent experiments; bars, SD. ‡ $P < 0.01$ .

time, we observed that, in CRC, CK2α knockdown induces G0/G1 phase arrest and promotes cell senescence. Similarly, inhibition of CK2α activity by emodin induced proliferation repression. In addition, CK2α knockdown increased p53/p21 expression and decreased C-myc expression. Accordingly, our results demonstrate that CK2α has multiple roles in the biological behavior of CRC, which is mediated by the regulation of

oncogenes and anti-oncogenes, including C-myc, p53 and p21.

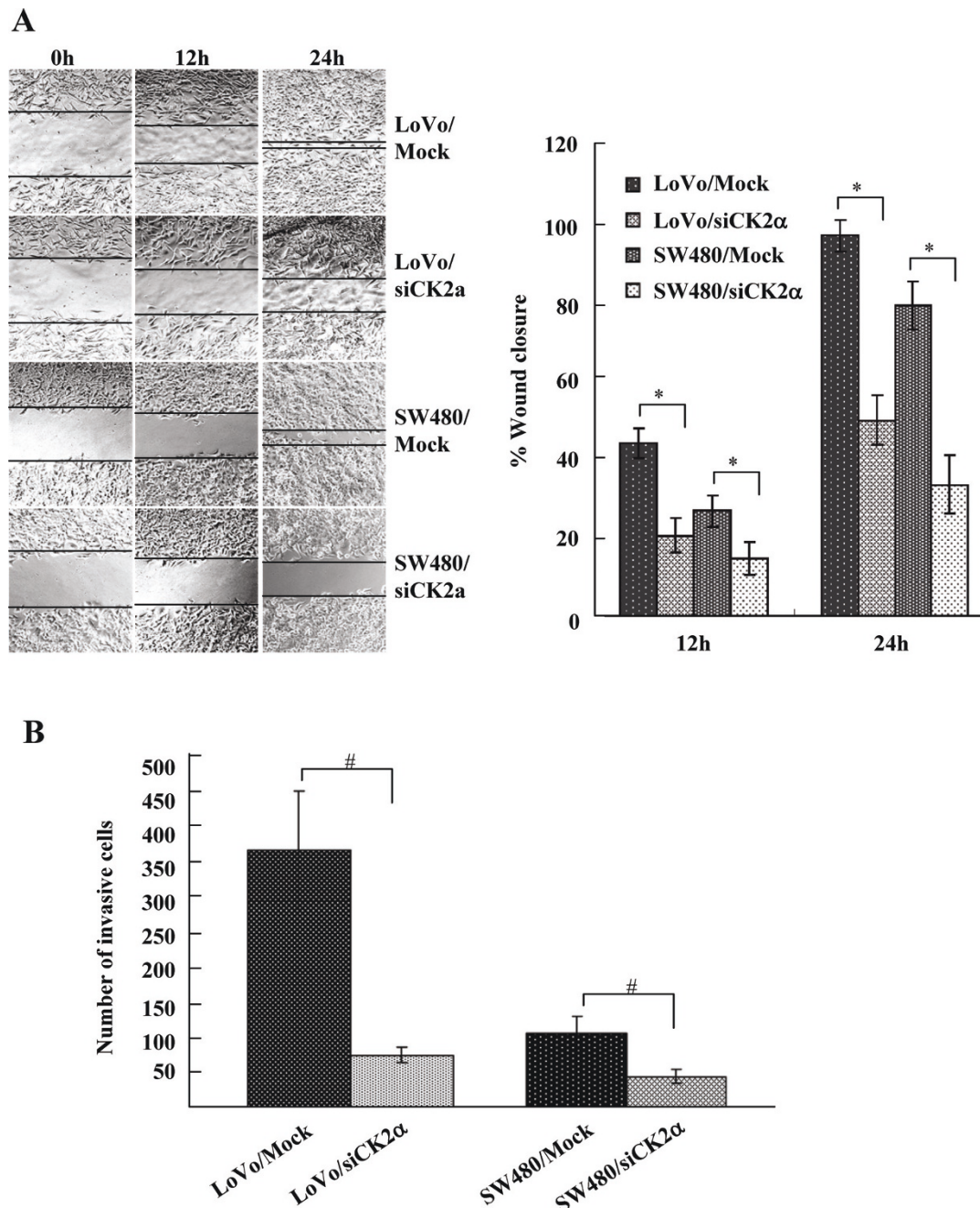
In our study, CK2α was found to have an important role in the biological behavior of CRC. Therefore, it is vitally important to investigate the potential regulatory mechanisms of CK2α. However, the regulatory mechanism of CK2α in contributing to the development of CRC is still unknown. The progression from normal



intestinal mucosa to adenoma (adenomatous mucosa) and finally to adenocarcinoma in CRC is closely correlated with the EMT process and changes in the expression of a series of genes, such as E-cadherin, vimentin, and  $\beta$ -catenin [24,25]. Thus, we further investigated whether CK2 $\alpha$  expression is associated with the EMT

process. Interestingly, in our study, assays of EMT-related markers found that CK2 $\alpha$  knockdown or activity inhibition can alter the expression of E-cadherin and vimentin and reverse the EGF-induced cytoplasmic-to-nuclear translocation of  $\beta$ -catenin. We confirmed that CK2 $\alpha$  modulates the process of EMT, thereby affecting

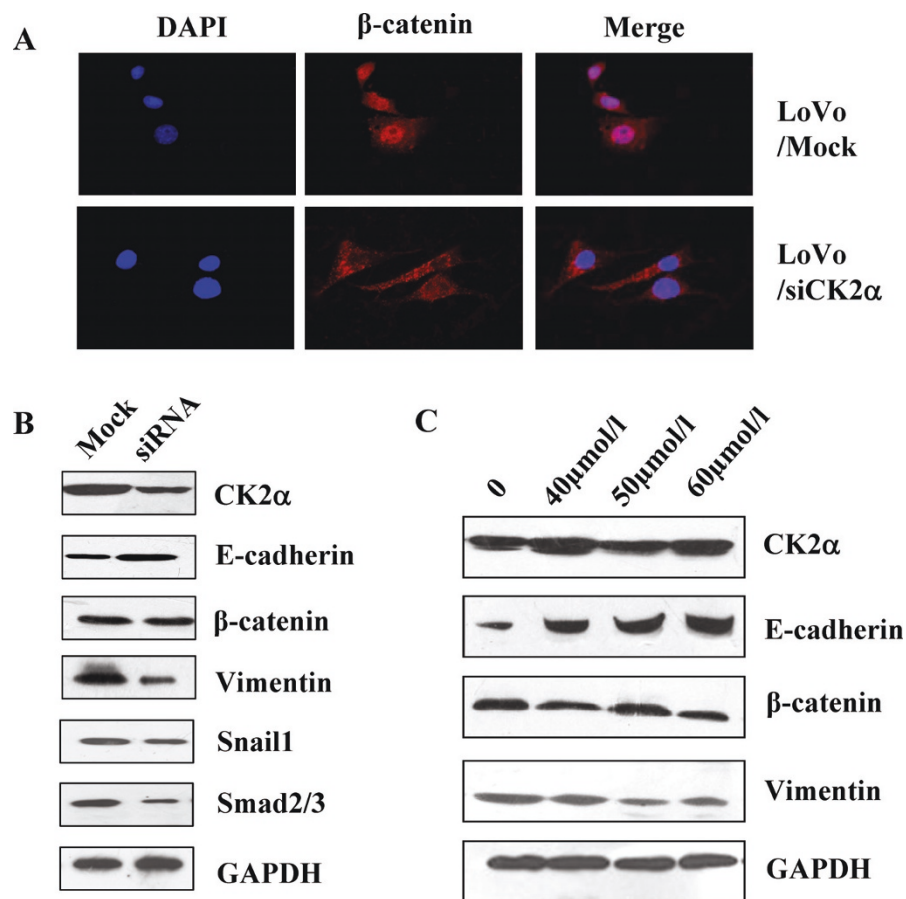




**Figure 5** Knockdown of CK2 $\alpha$  inhibited cell migration and invasion of CRC cell lines. (A) Monolayers of cells transfected with CK2 $\alpha$ -specific siRNAs were wounded by scraping, and wound closure was followed at 0, 12, and 24 h. The distance of the wound was measured. Columns, mean of three independent experiments; bars, SD. \* $P < 0.01$ . (B) After transfection with CK2 $\alpha$ -specific siRNAs for 18 h, cells that migrated through the filters were counted in five randomly selected fields. Columns, mean of three independent experiments; bars, SD. # $P < 0.05$ .

the regulation of cell migration and invasion by colorectal cancer cells. Snail1 and Smad2/3 are important transcriptional regulators of EMT that repress E-cadherin expression through binding to E-box motifs (5'-CANN TG-3') in the promoter [26-28]. In our study, we found that CK2 $\alpha$  knockdown decreases the expressions

of snail1 and smad2/3. It is clearly shown that downregulation of snail1 and smad2/3 by CK2 $\alpha$  knockdown facilitates an increase in E-cadherin expression and EMT repression. Previous studies found that, in Her-2/neu-driven mammary tumor cells, CK2 may be involved in EMT repression, which can be induced by green tea



**Figure 6** Inhibition of CK2 $\alpha$  reversed the nuclear translocation of  $\beta$ -catenin and altered EMT-related genes expression. Reversal of EGF-induced nuclear translocation of  $\beta$ -catenin occurred in LoVo cells transfected with CK2 $\alpha$ -specific siRNA (A), treated with EGF (100 ng/ml) for 2 h, and stained for immunofluorescence with  $\beta$ -catenin antibody (red) and DAPI (blue). (B) Western blot was used to detect the expression levels of CK2 $\alpha$ , E-cadherin,  $\beta$ -catenin, vimentin and the transcription factors snail1 and smad2/3 in cells transfected with CK2 $\alpha$ -specific siRNA. (C) One week later, in LoVo cells treated with emodin (40  $\mu$ mol/l, 50  $\mu$ mol/l and 60  $\mu$ mol/l), the expressions of E-cadherin,  $\beta$ -catenin and vimentin were detected by western blot analysis. GAPDH expression was used as a loading control.

polyphenol epigallocatechin-3-gallate (EGCG) [29]. In untransformed mammary epithelial cells, ectopic expression of CK2 $\alpha$  facilitates the induction of EMT-related genes expression, such as that of Slug and AhR, which may thus promote the process of EMT [30]. Here we show for the first time that, in CRC, CK2 $\alpha$  modulates the EMT process through regulating the location or expression of EMT-related genes. Recent studies have indicated that, in breast cancer, p53/p21 and C-myc not only regulate growth and senescence but are also involved in regulating the EMT process [31-34]. Thus, we inferred that, in CRC, alteration of p53/p21 and C-myc expression by CK2 $\alpha$  knockdown may facilitate the EMT repression observed in our study. These findings may account in part for the association of CK2 $\alpha$  overexpression with EMT in colorectal cancer. Additional studies are required to clarify the involvement of CK2 $\alpha$  in EMT and the development of colorectal cancer.

## Conclusions

Our study demonstrates that CK2 $\alpha$  is overexpressed in CRC and that CK2 $\alpha$  expression is much greater in CRC than in adenoma and is greater in adenoma than in normal colorectal epithelium. Moreover, it is noteworthy to observe that, for the first time, overexpression of CK2 $\alpha$  seems to be involved in the carcinogenesis and development of CRC through regulation of EMT-related genes. CK2 $\alpha$  may be a promising molecular target for the diagnosis and treatment of human CRC.

## Acknowledgements

This work was supported by the Natural Science Foundation of Guangdong Province, China (No. 10151051501000062).

## Author details

<sup>1</sup>Department of Radiation Oncology, Nanfang Hospital, Southern Medical University, Guangzhou 510515, Guangdong Province, China. <sup>2</sup>Hepatology

Unit and Department of Infectious Diseases, Nanfang Hospital, Southern Medical University, Guangzhou 510515, Guangdong Province, China.

#### Authors' contributions

JZ, HL, ZD, and QZ designed and performed experiments. JZ and HL performed the statistical analysis and drafted the manuscript. DW and LL helped in drafting the manuscript and contributed specific information and critical analysis throughout the manuscript. All authors read and approved the final manuscript.

#### Competing interests

The authors declare that they have no competing interests.

Received: 26 February 2011 Accepted: 25 June 2011

Published: 25 June 2011

#### References

- Jemal A, Siegel R, Ward E, Hao Y, Xu J, Murray T, Thun MJ: **Cancer statistics, 2008.** *CA Cancer J Clin* 2008, **58**:71-96.
- Sung JJ, Lau JY, Goh KL, Leung WK: **Increasing incidence of colorectal cancer in Asia: implications for screening.** *Lancet Oncol* 2005, **6**:871-876.
- Pino MS, Chung DC: **The chromosomal instability pathway in colon cancer.** *Gastroenterology* **138**:2059-2072.
- Boland CR, Goel A: **Microsatellite instability in colorectal cancer.** *Gastroenterology* **138**:2073-2087, e2073.
- Hadziavdic V, Pavlovic-Calic N, Eminovic I: **Microsatellite instability and loss of heterozygosity of tumor suppressor genes in Bosnian patients with sporadic colorectal cancer.** *Bosn J Basic Med Sci* 2008, **8**:313-321.
- Gocke CD, Benko FA, Kopreski MS, McGarrity TJ: **p53 and APC mutations are detectable in the plasma and serum of patients with colorectal cancer (CRC) or adenomas.** *Ann N Y Acad Sci* 2000, **906**:44-50.
- Derks S, Bosch LJ, Niessen HE, Moerkerk PT, van den Bosch SM, Carvalho B, Mongera S, Voncken JW, Meijer GA, de Bruine AP, et al: **Promoter CpG island hypermethylation- and H3K9me3 and H3K27me3-mediated epigenetic silencing targets the deleted in colon cancer (DCC) gene in colorectal carcinogenesis without affecting neighboring genes on chromosomal region 18q21.** *Carcinogenesis* 2009, **30**:1041-1048.
- Toyota M, Ohe-Toyota M, Ahuja N, Issa JP: **Distinct genetic profiles in colorectal tumors with or without the CpG island methylator phenotype.** *Proc Natl Acad Sci USA* 2000, **97**:710-715.
- Litchfield DW: **Protein kinase CK2: structure, regulation and role in cellular decisions of life and death.** *Biochem J* 2003, **369**:1-15.
- Meggio F, Pinna LA: **One-thousand-and-one substrates of protein kinase CK2?** *FASEB J* 2003, **17**:349-368.
- Seldin DC, Lou DY, Toselli P, Landesman-Bollag E, Dominguez I: **Gene targeting of CK2 catalytic subunits.** *Mol Cell Biochem* 2008, **316**:141-147.
- Padmanabha R, Chen-Wu JL, Hanna DE, Glover CV: **Isolation, sequencing, and disruption of the yeast CKA2 gene: casein kinase II is essential for viability in *Saccharomyces cerevisiae*.** *Mol Cell Biol* 1990, **10**:4089-4099.
- Buchou T, Vernet M, Blond O, Jensen HH, Pointu H, Olsen BB, Cochet C, Issinger OG, Boldyreff B: **Disruption of the regulatory beta subunit of protein kinase CK2 in mice leads to a cell-autonomous defect and early embryonic lethality.** *Mol Cell Biol* 2003, **23**:908-915.
- Kulartz M, Hiller E, Kappes F, Pinna LA, Knippers R: **Protein kinase CK2 phosphorylates the cell cycle regulatory protein Geminin.** *Biochem Biophys Res Commun* 2004, **315**:1011-1017.
- Canton DA, Litchfield DW: **The shape of things to come: an emerging role for protein kinase CK2 in the regulation of cell morphology and the cytoskeleton.** *Cell Signal* 2006, **18**:267-275.
- Gu L, Husain-Ponnampalam R, Hoffmann-Benning S, Henry RW: **The protein kinase CK2 phosphorylates SNAP190 to negatively regulate SNAPC DNA binding and human U6 transcription by RNA polymerase III.** *J Biol Chem* 2007, **282**:27887-27896.
- Guo C, Davis AT, Yu S, Tawfic S, Ahmed K: **Role of protein kinase CK2 in phosphorylation nucleosomal proteins in relation to transcriptional activity.** *Mol Cell Biochem* 1999, **191**:135-142.
- Ruzzene M, Pinna LA: **Addiction to protein kinase CK2: a common denominator of diverse cancer cells?** *Biochim Biophys Acta* **1804**:499-504.
- Wu D, Ding Y, Wang S, Zhang Q, Liu L: **Increased expression of high mobility group box 1 (HMGB1) is associated with progression and poor prognosis in human nasopharyngeal carcinoma.** *J Pathol* 2008, **216**:167-175.
- Masanaga R, Kohno H, Dhar DK, Ohno S, Shibakita M, Kinugasa S, Yoshimura H, Tachibana M, Kubota H, Nagasue N: **Cyclooxygenase-2 expression correlates with tumor neovascularization and prognosis in human colorectal carcinoma patients.** *Clin Cancer Res* 2000, **6**:4064-4068.
- Lin KY, Tai C, Hsu JC, Li CF, Fang CL, Lai HC, Hseu YC, Lin YF, Uen YH: **Overexpression of nuclear protein kinase CK2 alpha catalytic subunit (CK2alpha) as a poor prognosticator in human colorectal cancer.** *PLoS One* **6**:e17193.
- Ahmad KA, Harris NH, Johnson AD, Lindvall HC, Wang G, Ahmed K: **Protein kinase CK2 modulates apoptosis induced by resveratrol and epigallocatechin-3-gallate in prostate cancer cells.** *Mol Cancer Ther* 2007, **6**:1006-1012.
- Brown MS, Diallo OT, Hu M, Ehsanian R, Yang X, Arun P, Lu H, Korman V, Unger G, Ahmed K, et al: **CK2 modulation of NF-kappaB, TP53, and the malignant phenotype in head and neck cancer by anti-CK2 oligonucleotides in vitro or in vivo via sub-50-nm nanocapsules.** *Clin Cancer Res* **16**:2295-2307.
- Vincan E, Brabletz T, Faux MC, Ramsay RG: **A human three-dimensional cell line model allows the study of dynamic and reversible epithelial-mesenchymal and mesenchymal-epithelial transition that underpins colorectal carcinogenesis.** *Cells Tissues Organs* 2007, **185**:20-28.
- Chen X, Halberg RB, Burch RP, Dove WF: **Intestinal adenomagenesis involves core molecular signatures of the epithelial-mesenchymal transition.** *J Mol Histol* 2008, **39**:283-294.
- Vincent T, Neve EP, Johnson JR, Kukalev A, Rojo F, Albanell J, Pietras K, Virtanen I, Philipson L, Leopold PL, et al: **A SNAIL1-SMAD3/4 transcriptional repressor complex promotes TGF-beta mediated epithelial-mesenchymal transition.** *Nat Cell Biol* 2009, **11**:943-950.
- Phanish MK, Wahab NA, Colville-Nash P, Hendry BM, Dockrell ME: **The differential role of Smad2 and Smad3 in the regulation of pro-fibrotic TGFbeta1 responses in human proximal-tubule epithelial cells.** *Biochem J* 2006, **393**:601-607.
- Nawshad A, Medici D, Liu CC, Hay ED: **TGFbeta3 inhibits E-cadherin gene expression in palate medial-edge epithelial cells through a Smad2-Smad4-LEF1 transcription complex.** *J Cell Sci* 2007, **120**:1646-1653.
- Belguise K, Guo S, Sonenshein GE: **Activation of FOXO3a by the green tea polyphenol epigallocatechin-3-gallate induces estrogen receptor alpha expression reversing invasive phenotype of breast cancer cells.** *Cancer Res* 2007, **67**:5763-5770.
- Belguise K, Guo S, Yang S, Rogers AE, Seldin DC, Sherr DH, Sonenshein GE: **Green tea polyphenols reverse cooperation between c-Rel and CK2 that induces the aryl hydrocarbon receptor, slug, and an invasive phenotype.** *Cancer Res* 2007, **67**:11742-11750.
- Kim T, Veronese A, Pichiorri F, Lee TJ, Jeon YJ, Volinia S, Pineau P, Marchio A, Palatini J, Suh SS, et al: **p53 regulates epithelial-mesenchymal transition through microRNAs targeting ZEB1 and ZEB2.** *J Exp Med* **208**:875-883.
- Schubert J, Brabletz T: **p53 spreads out further: suppression of EMT and stemness by activating miR-200c expression.** *Cell Res* **21**:705-707.
- Cho KB, Cho MK, Lee WY, Kang KW: **Overexpression of c-myc induces epithelial mesenchymal transition in mammary epithelial cells.** *Cancer Lett* **293**:230-239.
- Liu M, Casimiro MC, Wang C, Shirley LA, Jiao X, Katiyar S, Ju X, Li Z, Yu Z, Zhou J, et al: **p21CIP1 attenuates Ras- and c-Myc-dependent breast tumor epithelial mesenchymal transition and cancer stem cell-like gene expression in vivo.** *Proc Natl Acad Sci USA* 2009, **106**:19035-19039.

doi:10.1186/1479-5876-9-97

**Cite this article as:** Zou et al: Protein kinase CK2 $\alpha$  is overexpressed in colorectal cancer and modulates cell proliferation and invasion via regulating EMT-related genes. *Journal of Translational Medicine* 2011 **9**:97.