

RESEARCH

Open Access

# Effects of molecular structural variants on serum Krebs von den Lungen-6 levels in sarcoidosis

Masahiko Shigemura<sup>1,2</sup>, Yasuyuki Nasuhara<sup>1,4\*</sup>, Satoshi Konno<sup>1</sup>, Chikara Shimizu<sup>1</sup>, Kazuhiko Matsuno<sup>2</sup>, Etsuro Yamaguchi<sup>3</sup> and Masaharu Nishimura<sup>1</sup>

## Abstract

**Background:** Serum Krebs von den Lungen-6 (KL-6), which is classified as human mucin-1 (MUC1), is used as a marker of sarcoidosis and other interstitial lung diseases. However, there remain some limitations due to a lack of information on the factors contributing to increased levels of serum KL-6. This study was designed to investigate the factors contributing to increased levels of serum KL-6 by molecular analysis.

**Methods:** Western blot analysis using anti-KL-6 antibody was performed simultaneously on the bronchoalveolar lavage fluid (BALF) and serum obtained from 128 subjects with sarcoidosis.

**Results:** KL-6/MUC1 in BALF showed three bands and five band patterns. These band patterns were associated with the *MUC1* genotype and the KL-6 levels. KL-6/MUC1 band patterns in serum were dependent on molecular size class in BALF. Significantly increased levels of serum KL-6, serum/BALF KL-6 ratio and serum soluble interleukin 2 receptor were observed in the subjects with influx of high molecular size KL-6/MUC1 from the alveoli to blood circulation. The multivariate linear regression analysis involving potentially relevant variables such as age, gender, smoking status, lung parenchymal involvement based on radiographical stage and molecular size of KL-6/MUC1 in serum showed that the molecular size of KL-6/MUC1 in serum was significant independent determinant of serum KL-6 levels.

**Conclusions:** The molecular structural variants of KL-6/MUC1 and its leakage behavior affect serum levels of KL-6 in sarcoidosis. This information may assist in the interpretation of serum KL-6 levels in sarcoidosis.

**Keywords:** Serum KL-6, Molecular structural variant, Sarcoidosis

## Background

Krebs von den Lungen-6 (KL-6) is a mucinous sialylated sugar chain on human mucin-1 (MUC1) [1,2]. MUC1 consists of a large extracellular domain, a single-pass transmembrane region, and an intracellular cytoplasmic tail [3,4]. The large extracellular domain contains a variable number of tandem repeat (VNTR) regions that are heavily glycosylated (Figure 1). In normal lung tissue, KL-6 is expressed on type II pneumocytes [1,5]. KL-6 is present in high concentrations in bronchoalveolar lavage fluid (BALF) and also circulates in blood [6]. Serum KL-6 is specifically

elevated in a majority of patients with interstitial lung diseases (ILDs), and this phenomenon is considered to reflect the production by regenerating type II epithelial cells based on disease activity [6-13]. Therefore, measurement of serum KL-6 is widely accepted, particularly in Japan, as a diagnostic test for ILDs and a marker of disease activity.

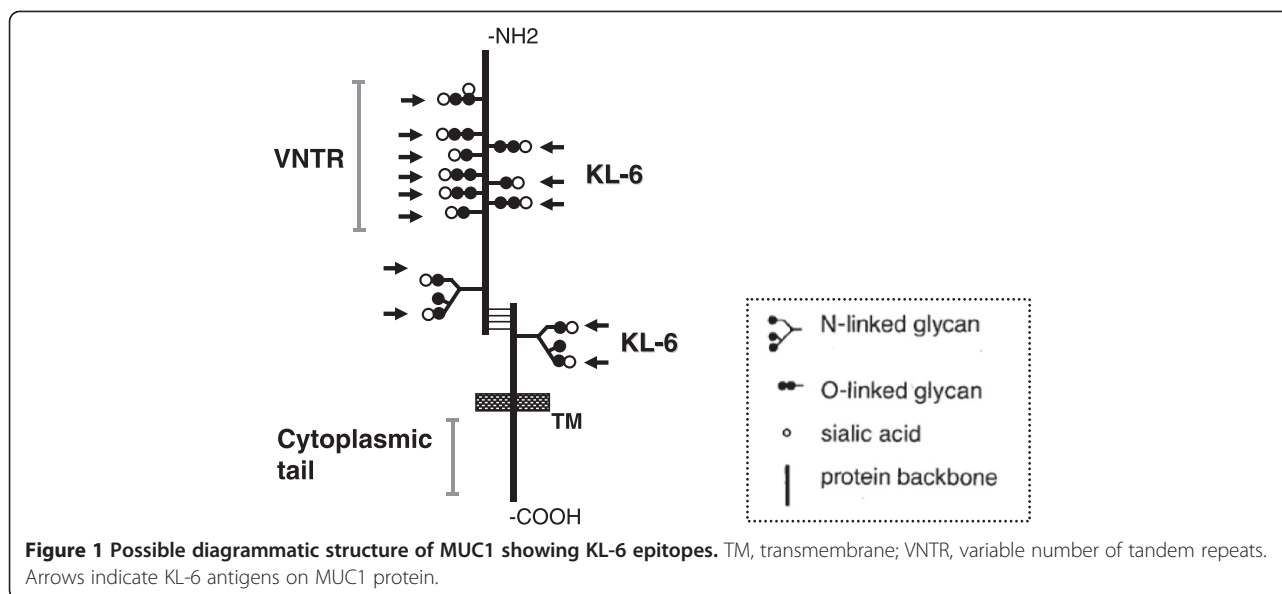
Sarcoidosis is a multiorgan inflammatory disease of unknown origin that is characterized by noncaseating epithelioid cell granuloma and lymphocytic alveolitis [14]. Because the natural history and prognosis of sarcoidosis are unpredictable, it is important to monitor disease development during management [14]. KL-6 is considered to be one of the useful serum markers for monitoring diseases activity in sarcoidosis. Several investigators have reported that levels of serum KL-6 reflect lymphocytic alveolitis and increased parenchymal infiltration [11-13]. However, we have experienced some limitations in the

\* Correspondence: nasuhara@med.hokudai.ac.jp

<sup>1</sup>First Department of Medicine, Hokkaido University School of Medicine, Sapporo, Japan

<sup>4</sup>First Department of Medicine, Hokkaido University School of Medicine, North 15, West 7, Kita-ku, Sapporo, 060-8638, Japan

Full list of author information is available at the end of the article



interpretation of serum KL-6 levels, which include its dissociation with disease activity and different behavior from other serum markers in some cases. This prompted us to examine the factors contributing to increased levels of serum KL-6.

There are known variations in the length and structure of the MUC1 protein that result from polymorphisms in the VNTR [15,16]. The size class of MUC1 protein in tears is reported to be linked with the genotype of a single nucleotide polymorphism (SNP) in exon 2 (rs4072037) of the *MUC1* gene [16]. In addition, Janssen et al. recently reported an association between this polymorphism and variations in serum KL-6 levels in healthy individuals and patients with pulmonary sarcoidosis [17]. Based on these reports, we hypothesized that: 1) various molecular sizes of KL-6/MUC1, which are genetically determined by *MUC1* gene polymorphism (such as rs4072037), would be present in BALF; 2) the influx of KL-6/MUC1 from alveoli to blood is dependent on the molecular size of KL-6/MUC1; and finally, 3) serum KL-6 levels would be affected by the molecular size and leakage behavior of KL-6/MUC1, in addition to increased local production of KL-6/MUC1 in lung.

In this study, we examined the factors contributing to the variable increases in serum levels of KL-6 using molecular analysis in patients with sarcoidosis, all of whom simultaneously underwent blood sampling and bronchoalveolar lavage (BAL).

## Materials and methods

### Subjects

A total of 128 subjects with pulmonary sarcoidosis visiting the pulmonary clinic of the First Department of Medicine, Hokkaido University Hospital between April

2000 and July 2011 were enrolled into this study. The diagnosis of pulmonary sarcoidosis was established based on clinical findings and histologic evidence of noncaseating epithelioid cell granulomas, after excluding known causes of granulomatous diseases, in accordance with the American Thoracic Society/European Respiratory Society/World Association of Sarcoidosis and other Granulomatous Disorders guidelines [14]. All subjects underwent BAL, which is a routine diagnostic procedure at our hospital for patients with undiagnosed sarcoidosis, as described previously [18,19]. Serum samples were collected 30 minutes before BAL in all subjects. The study population, sex, age, smoking history, radiographical stage [14], BALF findings, pulmonary functions results, and levels of serum markers are shown in Table 1. The smoking status of one subject was unknown. BALF cell analysis of 1 patient was not performed due to problems with BAL storage. Pulmonary function data were available from 122 patients.

All patients had provided written informed consent for their samples to be used in future clinical research [18,19]. The Institutional Review Board of Hokkaido University Hospital for Clinical Research approved the study protocols (approval No. 009–0295).

### Western Blotting

Western blotting was performed on BALF and serum from all subjects. Briefly, protein samples from BALF and serum were electrophoresed on 3%–8% NUPAGE Tris-acetate gels (Invitrogen, Carlsbad, CA) and were transferred to nitrocellulose membranes (Invitrogen). Membranes were blocked with PBS containing 3% skim milk. Western blot analysis was performed using anti-KL-6 antibody (anti-KL-6 antibody was kindly provided

**Table 1 Characteristics of the study population**

	Sarcoidosis
No. of subjects	128
Men/Women	34/94
Age, yr	55(17–79)
Cigarette smoking (never/former/current)	55/29/43
Radiographical stage (0/I/II/III)	21/56/43/8
BALF findings	
Total cell counts, 10 <sup>4</sup> /mL	18.1 (3.2–92.2)
Macrophages, %	66.3 (6.0–97.0)
Lymphocytes, %	32.8 (2.9–76.3)
CD4/CD8, ratio	4.93 (0.65–30.16)
Pulmonary function result	
VC, % predicted	113.0 (70.5–153.7)
D <sub>LCO</sub> , % predicted	90.1 (37.0–142.0)
Serum maker	
soluble IL-2 receptor, U/mL	805 (117–4990)
KL-6 levels	
BALF, U/mL	296 (90–1507)
serum, U/mL	336 (102–3091)

Data are presented as median (range).

by Sanko Junyaku Co., Ltd.) and DF-3 antibody (Santa Cruz Biotechnology, Santa Cruz, CA) followed by alkaline phosphatase-conjugated goat anti-mouse Ig. Bands were developed using the WesternBreeze Chromogenic Immunodetection Kit (Invitrogen).

#### Genotyping of *MUC1* polymorphism

The *MUC1* SNP (exon 2; rs4072037) was genotyped in 80 patients with sarcoidosis, who had consented to future genetic studies, using the TaqMan system (Assay ID: C\_27532642\_10, Applied Biosystems, Foster City, CA).

#### Measurement of KL-6, albumin and soluble interleukin 2 receptor

KL-6 levels in both BALF and serum were measured by electrochemiluminescent immunoassay using the PICO-LUMI KL-6 kit (Sanko Junyaku, Tokyo, Japan). Reference intervals were 105.3–401.2 U/mL for Japanese normal subjects. Albumin levels in BALF were measured on a Hitachi 7070 automated analyzer with TAC-2 test Albumin U (Medical and biological laboratories co., LTD., Nagoya, Japan). Serum soluble interleukin 2 (IL-2) receptor was measured by a solid-phase, two-site chemiluminescent immunometric assay (IMMULITE 2000 IL2R, Siemens Healthcare Diagnostics, Los Angeles, CA).

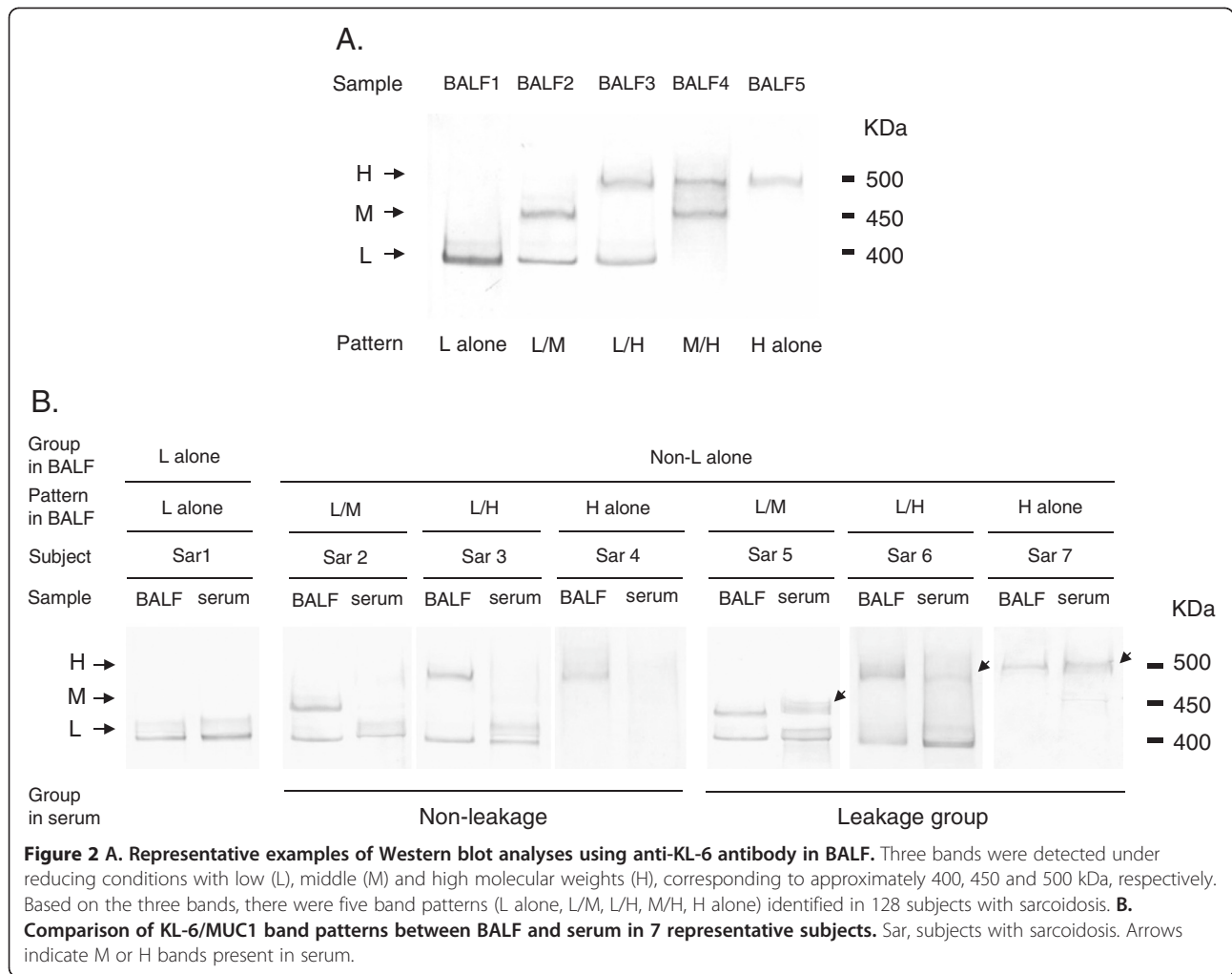
#### Statistical methods

Statistical analysis was performed with SYSTAT 11 for Windows (Systat Inc., Chicago, IL) and SAS (SAS Institute, Inc., Cary, NC). Data were expressed as median and ranges. All data were not normally distributed on univariate analysis, the natural logarithm of all data were used for further statistical analyses. Comparisons were performed by unpaired *t*-test or ANOVA adjusting potentially relevant variable such as cigarette smoking when assessing the influence of smoking status (never, ex or current). Differences between groups were evaluated by ANOVA and were assessed by Bonferroni post-hoc test. The relationship between leakage behavior of KL-6/MUC1 and smoking status was assessed using  $\chi^2$ -test. Correlations between different parameters were determined by Pearson's correlation coefficient. We used Haploview software version 4.1 (<http://www.broad.mit.edu/mpg/haploview>; Barrett et al. 2005) in order to compare the observed numbers of genotypes with the number of expected genotypes under Hardy-Weinberg equilibrium using  $\chi^2$ -test. The association between *MUC1* genotypes and KL-6/MUC1 band patterns in BALF was assessed using Cochran-Mantel-Haenszel Statistics. In order to identify independent factors predictive for the serum KL-6 levels, the multivariate linear regression analysis involving potentially relevant variables was performed. A *p* value of <0.05 was regarded as significant.

#### Results

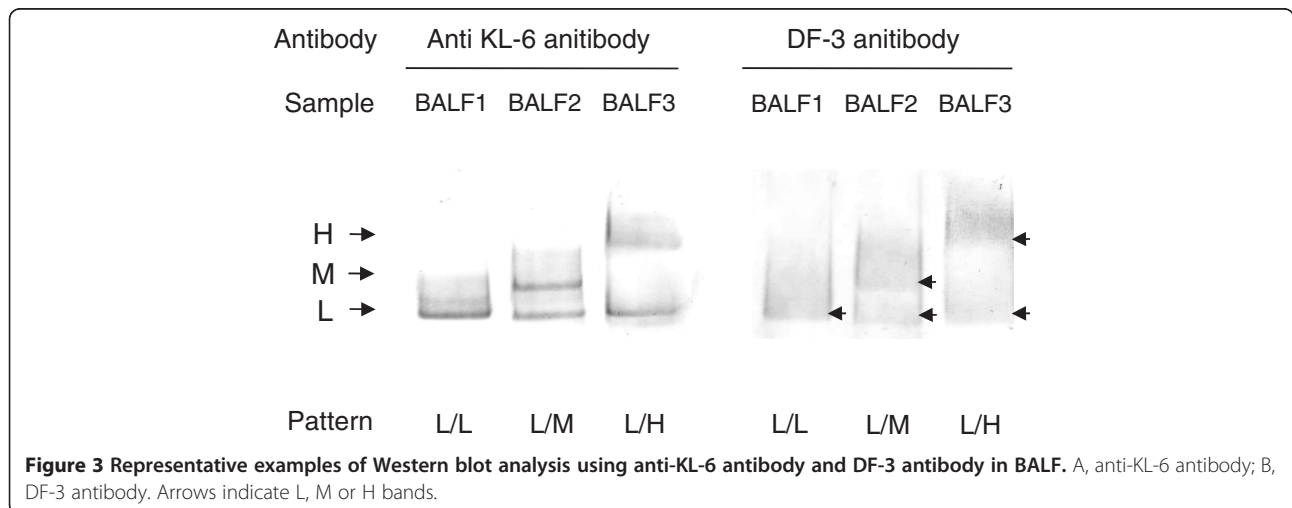
##### Western blot analysis

Western blot analysis of BALF with anti-KL-6 antibody revealed three bands (low molecular size (L), middle molecular size (M) and high molecular size (H), at approximately 400, 450 and 500 kDa, respectively) under reducing conditions. Furthermore, based on the combination of these bands, five band patterns (L alone, L/M, L/H, M/H and H alone) were identified (Figure 2A). In addition, Western blot analysis with DF-3 antibody showed the same band patterns corresponding to the KL-6/MUC1 band patterns in BALF (Figure 3). All Subjects who displayed the L alone pattern in BALF also displayed L alone bands in serum (Figure 2B; Sar 1). On the other hand, subjects who displayed non-L alone patterns in BALF showed diverse patterns in serum. Based on the similarities and differences in band patterns between BALF and serum, we classified these subjects into two groups; “non-leakage” and “leakage”. The non-leakage group displayed only L bands or neither M nor H bands in serum, despite the presence of M or H bands in BALF (Figure 2B; Sar 2, 3 and 4). In contrast, the leakage group displayed identical band patterns between BALF and serum (Figure 2B; Sar 5, 6 and 7). The frequency and percentage of KL-6/MUC1 band patterns in BALF and in serum are summarized in Table 2. Thirty-one of 47 subjects



with non-L alone in BALF (66.0%), including 5 subjects in whom bands were not detected in serum, were classified as “non-leakage”. The leakage behavior of high molecular size

KL-6/MUC1 (i.e., M or H band) appeared to be influenced by smoking status (never, ex or current), but it did not reach statistical significance ( $\chi^2$ -test,  $p > 0.05$ ) (Table 3).



**Table 2 The frequency and percentage of KL-6/MUC1 band patterns in between BALF and serum**

		Band pattern in serum					Total	
		L alone	L/M	L/H	H alone	Not detected		
Band pattern in BALF	L alone	81					81	
		100.0%					100.0%	
	Non L alone	L/M	8 *	8 **				16
			50.0%	50.0%				100.0%
		L/H	18 *		6 **			24
			75.0%		25.0%			100.0%
M/H						3 *	3	
					100.0%	100.0%		
H alone					2 **	2 *	4	
					50.0%	50.0%	100.0%	
Total		107	8	6	2	5	128	
		83.6%	6.3%	4.7%	1.6%	3.9%	100.0%	

\*, non-leakage group; \*\*, leakage group.

**Relationship between KL-6 levels and KL-6/MUC1 size class**

BALF KL-6 levels in subjects with the H alone or M/H, L/H and L/M patterns in BALF were significantly higher than those with the L alone pattern in BALF ( $p < 0.001$ ,  $< 0.001$  and  $0.003$ , respectively) (Figure 4A), thus suggesting that larger molecular size of KL-6/MUC1 is associated with higher levels of BALF KL-6. Similarly, serum KL-6 levels in subjects with the L/H pattern in serum were significantly higher than those with the L alone pattern ( $p < 0.001$ ) (Figure 4B).

**Relationship between MUC1 genotypes and KL-6/MUC1 size**

We examined the allele frequency of rs4072037. There was 129 (80.6%) for A and 31 (19.4%) for G. The genotype frequencies were 53 (66.3%) for AA, 23 (28.7%) for AG, and 4 (5.0%) for GG. No significant deviation from the Hardy-Weinberg equilibrium was observed ( $p > 0.05$ ). When the KL-6 levels in both serum and BALF were grouped according to the genotype, the results were AA (serum: 285U/mL, 102–2627; BALF: 240U/mL, 90–1224),

AG (serum: 480U/mL, 183–3091, BALF: 662U/mL, 130–1336) and GG (serum: 437U/mL, 337–1600; BALF: 444U/mL, 219–633) The KL-6 levels in both serum and BALF from the subjects with AG genotype were higher than those with AA genotype ( $p < 0.001$ ,  $< 0.001$ , respectively). Table 4 shows the relationship between MUC1 genotypes and KL-6/MUC1 band patterns in BALF. There is a significant relationship between genotype and KL-6/MUC1 band patterns in BALF (Cochran-Mantel-Haenszel Statistics,  $p < 0.001$ ); the A allele is linked with L bands and the G allele with H bands.

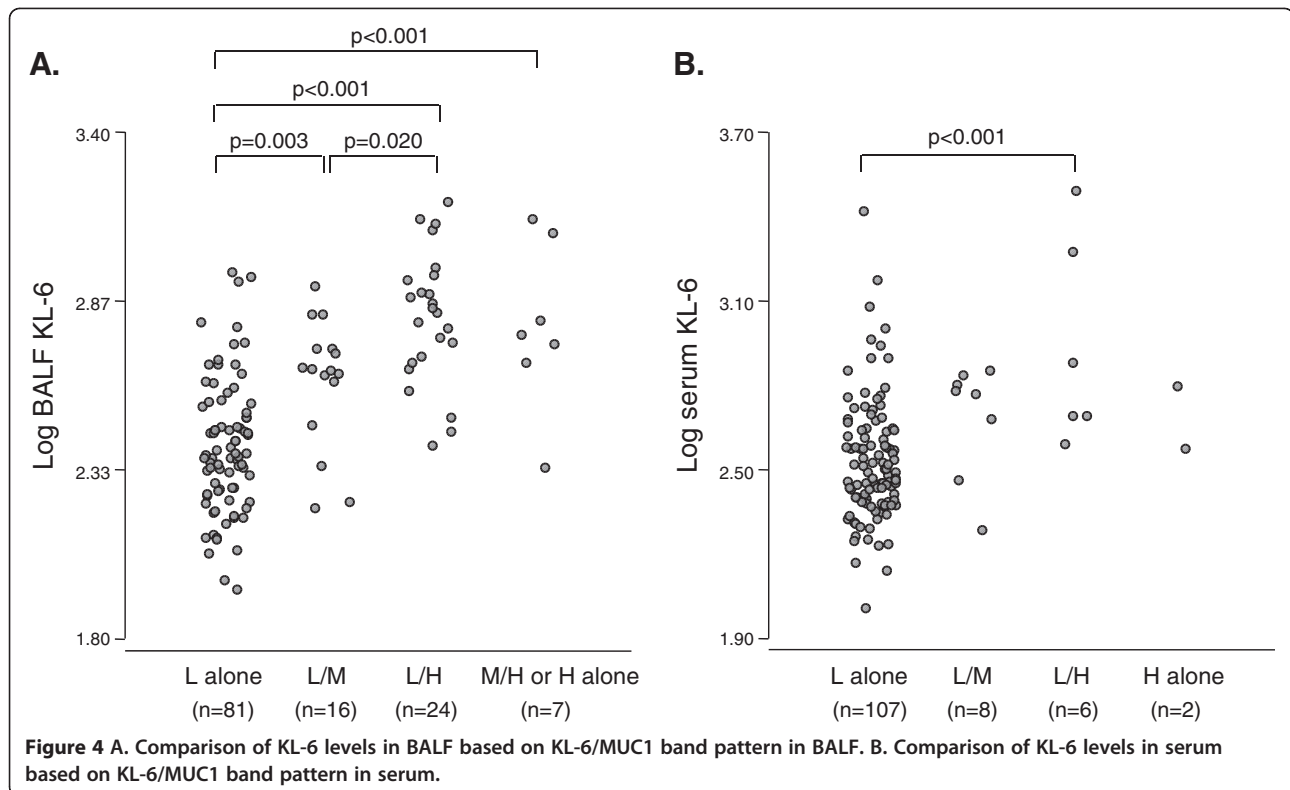
**Table 3 Relationship between leakage behavior of high molecular size KL-6/MUC1 and smoking status**

		Leakage behavior of high molecular size KL-6/MUC1		Total
		Non-leakage	Leakage	
Smoking status	Non/Ex smoker	22	8	30
		73.3%	26.7%	100.0%
	Current smoker	9	8	17
		52.9%	47.1%	100.0%
Total		31	16	47
		66.0%	34.0%	100.0%

$\chi^2$ -test,  $p > 0.05$ .

**Determination of leakage behavior of high molecular size KL-6/MUC1**

As the subjects who displayed non-L alone patterns in BALF showed diverse band patterns in serum, we examined the presence of differences in the leakage behavior of high molecular size KL-6/MUC1 (i.e., M or H band). We compared the serum KL-6 levels, the serum/BALF KL-6 ratio, the BALF albumin levels, the numbers of lymphocytes and CD<sub>4</sub> positive cells in BALF and the serum soluble IL-2 receptor levels between the non-leakage and the leakage groups. As expected, the serum KL-6 levels in the leakage group were significantly higher than those in the non-leakage group ( $p = 0.023$ , Figure 5A). In addition, there was a significant increase in the serum/BALF KL-6 ratio in the leakage group, when compared with the non-leakage group ( $p = 0.002$ , Figure 5B). This result remained significant even after controlling for the smoking status (ANOVA,  $p = 0.005$ ). In contrast, no significant differences in the BALF albumin levels between the non-leakage and the leakage groups were observed ( $p = 0.510$ , Figure 5C). The leakage group tended to have the slightly higher numbers of lymphocytes and CD<sub>4</sub> positive cells in BALF than the non-leakage group ( $p = 0.057$  and  $0.068$ , respectively)



(Figure 5D, E). In addition, the serum soluble IL-2 receptor levels in the leakage group was significantly higher than the non-leakage group ( $p = 0.026$ , Figure 5F).

#### Impact of KL-6/MUC1 molecular structural variants on serum KL-6 levels

Recent reports have shown that serum KL-6 levels may be affected by several potential factors, such as age, gender and smoking status, other than lung diseases [17,20]. In addition, previous reports have found that radiographical staging showing parenchymal involvement (stages II and higher) is correlated with significantly higher KL-6 levels, as compared to patients without parenchymal involvement

**Table 4 Relationship between MUC 1 gene polymorphism (rs4072037) and KL-6/MUC 1 band patterns in BALF**

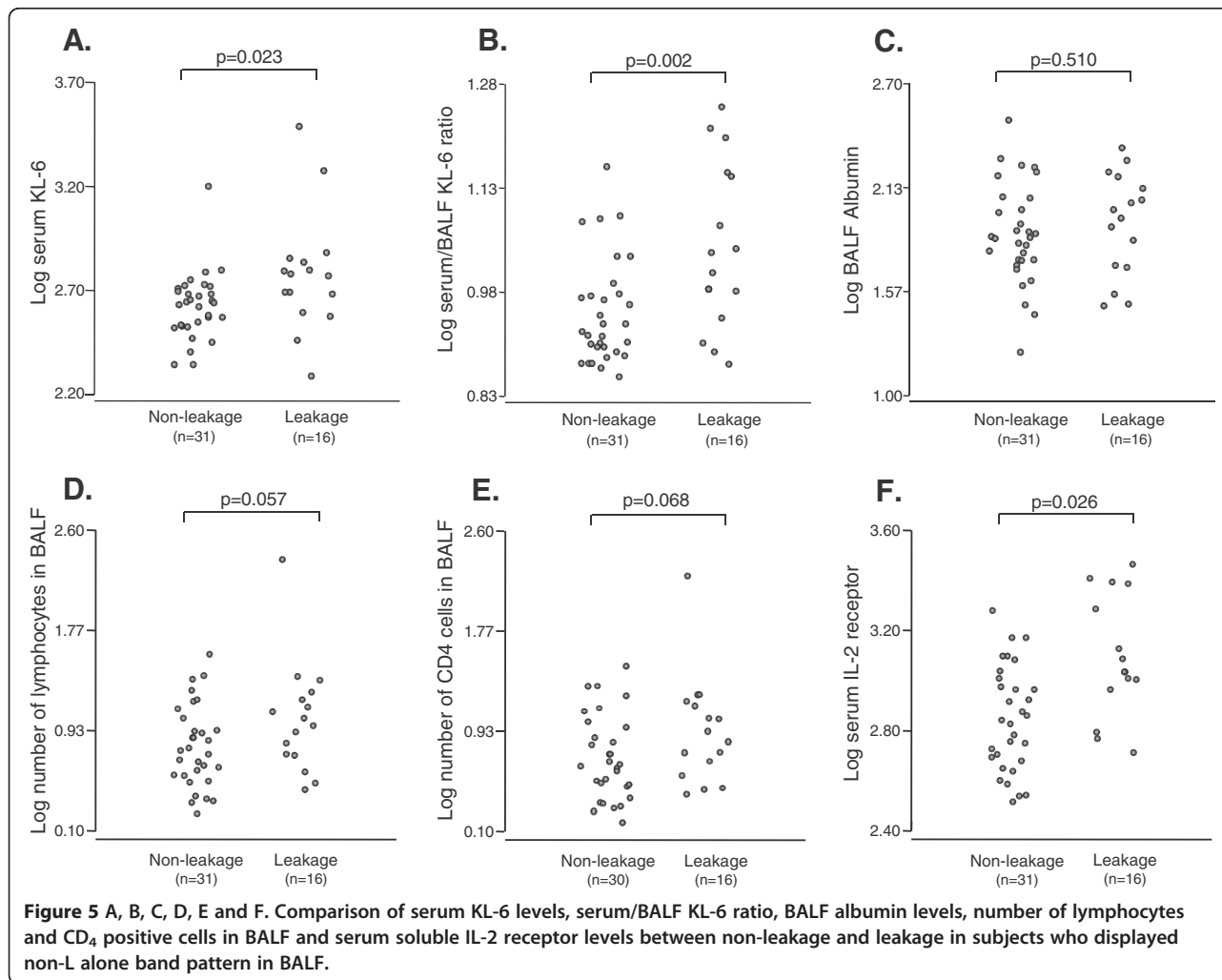
		KL-6/MUC1 band pattern in BALF					Total
		L alone	L/M	L/H	M/H	H alone	
rs4072037	AA	47	5	1			53
		88.7%	9.4%	1.9%			100.0%
	AG	1	6	15	1		23
		4.3%	26.1%	65.2%	4.3%		100.0%
	GG			1	1	2	4
				25.0%	25.0%	50.0%	100.0%
Total		48	11	17	2	2	80
		60.0%	13.8	21.3%	2.5%	2.5%	100.0%

Cochran-Mantel-Haenszel Statistics,  $p < 0.001$ .

(stages 0 and I) [10-12]. In univariate analyses between serum KL-6 levels and potentially relevant variables, there were significant differences between the subjects without and with lung parenchymal involvement based on radiographical stage [14] ( $p = 0.020$ ) and those with low and higher molecular size KL-6/MUC1 in serum ( $p < 0.001$ ) (Table 5). In order to identify independent factors predictive for the serum KL-6 levels, the multivariate linear regression analysis involving potentially relevant variables such as age (years), gender (male or female), smoking status (never, ex or current), lung parenchymal involvement (without or with parenchymal infiltration) and molecular size of KL-6/MUC1 in serum (low or higher molecular size) was performed. The multivariate linear regression analysis showed that only molecular size of KL-6/MUC1 in serum (Standardized  $\beta$  coefficient = 0.365,  $p < 0.001$ ) was significant independent determinant of serum KL-6 levels (Table 6).

#### Discussion

The increased levels of serum KL-6 in patients with ILDs are thought to result from an increased local production of KL-6/MUC1 in lung and enhanced permeability following the destruction of the alveolar-blood interface [5,21]. In this study, we discovered three important findings with regard to the factors contributing to the variability in serum levels of KL-6. First, KL-6/MUC1 in BALF showed three bands and five band patterns, and these band patterns were associated with *MUC1* genotype and KL-6 levels. Second, the KL-6/



MUC1 band patterns in serum were dependent on molecular size class in BALF, as proteins of different size classes did not pass through the alveolar-blood interface in a similar manner. Finally, the molecular structural variants of KL-6/MUC1 and its leakage behavior affect serum KL-6 levels. We believe that what we found in this study would provide new insight into understanding the limitations related to the measurement of serum KL-6.

Before further discussion on these issues, we should comment on the limitations of this study. It is possible that the size classes of KL-6/MUC1 detected by Western blot analysis using anti-KL-6 antibody were affected by glycosylation of MUC1, and may not strictly reflect molecular weight. However, Western blot analysis using DF-3 antibody, which recognize the core peptide of MUC1 [22,23], displayed the same band patterns, suggesting that the glycosylation of MUC1 had little influence on the molecular size of KL-6/MUC1 characterized by Western blot analysis using anti-KL-6 antibody. We could not examine the local production of KL-6/MUC1

and quantitatively analyze each molecular size of KL-6/MUC1 in this study. The local production of KL-6/MUC1 may still be important for the interpretation of serum KL-6 levels.

The larger MUC1 proteins may express more KL-6 on its surface than the smaller MUC1 proteins. In this study, KL-6 levels in BALF, which are little influenced with alveolar-blood interface, from the subjects with larger molecular size of KL-6/MUC1 (i.e. M and H band) were significantly higher than those with low molecular size (i.e. L band). Janssen et al. reported that the *MUC1* genotype was of strong influence on serum KL-6 levels in the Caucasian population and also speculated that the positive association between *MUC1* gene polymorphism and serum KL-6 levels is caused by *MUC1* allele-related molecular size. The *MUC1* genotype was clearly linked with KL-6/MUC1 band pattern and related to KL-6 levels in our study. Therefore, KL-6 levels are affected by genetically determined molecular sizes of KL-6/MUC1. Furthermore, our results showed that significantly

**Table 5 Univariate analyses between Log serum KL-6 and potentially relevant variables**

		Correlation with Log serum KL-6	
		R*	P-value
Age		0.065	0.466
		Mean ± SD	P-value**
Gender	Male	2.57 ± 0.237	0.726
	Female	2.56 ± 0.264	
Smoking status	Non/Ex smoker	2.54 ± 0.205	0.072
	Current smoker	2.62 ± 0.302	
Lung parenchymal involvement	Without	2.53 ± 0.198	0.020
	With	2.63 ± 0.291	
Band pattern in serum	Low molecular size	2.54 ± 0.223	<0.001
	Higher molecular size	2.78 ± 0.284	

\* Pearson correlation coefficient; \*\* unpaired t-test.

increased levels of serum KL-6 were observed in the subjects with influx of high molecular size KL-6/MUC1 from the alveoli to blood circulation. This is the first reports describing the influence of leakage behavior of high molecular size KL-6/MUC1 on serum KL-6 levels. Considering for the molecular size of KL-6/MUC1 and its leakage behavior may increase the value of serum KL-6 as a marker of sarcoidosis.

With regard to *MUC1* gene polymorphism and KL-6/MUC1 band patterns in BALF, although the A allele was linked with the L band and the G allele was linked with

**Table 6 Independent factors predictive for serum KL-6 levels**

	Standardized $\beta$ coefficient	P-value
Age	0.040	0.673
Gender	-0.025	0.782
Smoking status	0.087	0.353
Lung Parenchymal involvement*	0.125	0.164
Molecular size of KL-6/MUC1 in serum	0.365	<0.001

\* Based on radiographical stage.

the H band, 5 of 53 subjects (9.4%) with the AA genotype, 7 of 23 subjects (30.4%) with the AG genotype and 1 of 4 subjects (25.0%) with the GG genotype exhibited the M band. *MUC1* alleles can mostly be divided into size classes containing small (30–45) or large (60–90) numbers of repeats on Southern blot analysis [15,24]. In other words, the molecular size of the protein, which directly reflects the allele length, is associated with the number of tandem repeats on VNTR regions. We thus speculate that the presence of M bands in BALF indicates the presence of intermediate numbers of tandem repeats in VNTR regions.

Influx mechanism of KL-6/MUC1 from the alveoli to blood circulation is unclear. In sarcoidosis, increased levels of BALF albumin are thought to result from an influx of plasma albumin into the alveoli [25]. To analyze the leakage behavior of high molecular size KL-6/MUC1, we also measured the concentration of BALF albumin in subjects with non-L alone pattern in BALF. No significant differences between the groups of non-leakage and leakage of high molecular size KL-6/MUC1 were observed in the BALF albumin levels. In contrast, there was a significant increase in the serum/BALF KL-6 ratio, which is an indicator of leakage behavior, in the leakage group. The influx of the high molecular size KL-6/MUC1 may be not parallel to albumin-size proteins and be complicated.

The passage of high molecular size KL-6/MUC1 from alveoli to blood may be regulated by pore size and/or electrostatic forces [26–29]. In an isolated dog lung, Conhaim et al. proposed that the lung epithelial barrier is best described by a three-pore-size model, including a very small number of large pores (400-nm radius), an intermediate number of medium-size pores (40-nm radius), and a very large number of small pores (1.3-nm radius) [28]. If such a theory could be extrapolated to the human lung, it is possible that high molecular size KL-6/MUC1 passes through the alveolar-blood interface, considering that the molecular diameter of KL-6/MUC1 is approximately 200–500 nm [4]. A number of studies have indicated that the surfaces of endothelium, epithelium and basement membranes are covered by negatively charged proteoglycans. Under such conditions, electrostatic forces would affect the movement of charged versus uncharged macromolecules [29,30]. As most lung proteins, particularly mucins, are negatively charged at physiologic pH [31,32], it is very plausible that similar electrostatic repulsion influences their transfer from lung into blood. Hence, we speculate that electrostatic forces would limit the transfer of high molecular size KL-6/MUC1 more efficiently at the alveolar-blood interface, as compared to small molecular size, under healthy conditions. However, if such barrier function is damaged, the high molecular size proteins would more easily pass through the alveolar



blood interface. In our study, the numbers of lymphocytes in BALF tended to be elevated and the serum IL-2 receptor levels were significantly increased in the subjects in which the influx of the high molecular size KL-6/MUC1 was observed. The percentage of lymphocytes in BALF is thought to be a marker of alveolitis [33,34]. Soluble IL-2 receptor was reported to be associated with T-lymphocyte alveolitis [35]. Our results suggest that high molecular size KL-6/MUC1 might transfer from the alveoli to blood circulation as a result of alveolitis.

Cigarette smoke exposure is known to increase the permeability of the lung epithelial/endothelial barrier [36,37]. The mechanisms by which cigarette smoke disrupts epithelial integrity have not been fully defined, but are likely to involve alterations in the function of the tight junctions [38], which normally maintain the polarity of the epithelial cells and limit flow of ions and proteins from one side of the monolayer to the other. In this study, we did not demonstrate statistically significant relationship between smoking status and the leakage behavior of high molecular size KL-6/MUC1. The multivariate linear regression analysis showed that the molecular size of KL-6/MUC1 in serum was only significantly independent determinant of serum KL-6 levels. However, there have been a few reports describing that serum KL-6 levels may be affected by smoking status in healthy controls [17,20]. Further studies to analyze relationships between cigarette smoking and leakage behavior of KL-6/MUC1 and KL-6 levels in healthy controls would be necessary.

The findings of this study are important for both the interpretation of serum KL-6 levels and the consideration of serum marker proteins, such as surfactant protein (SP)-D [39], that originate in lung epithelium and have been identified in serum from patients with sarcoidosis and other ILDs. Leth-Larsen et al. reported that SP-D gene polymorphism influences the potential for oligomerization, which results in significantly different SP-D serum levels [40]. Their data strongly indicates that the passage of SP-D protein through the alveolar-blood interface is also dependent on the size of the SP-D protein corresponding to the gene polymorphism. With regard to serum markers in lung diseases, the different behaviors among markers have long been a subject of debate. The molecular size classes that may be specific to each marker protein could explain the different behaviors of these proteins in serum.

Finally, it is noteworthy that the minor allele (i.e., G allele) frequency of rs4072037 may differ with ethnicity. In the Caucasian population, Janssen et al. reported that it was 0.45 [17], which is much higher than our observed frequency of 0.21, and the frequency in the Japanese population reported by HapMap (www.hapmap.org). Thus, the interpretation of serum KL-6 levels may be more complex in the Caucasian population than in Japanese population. This may explain the fact that measurements of KL-6 are

not well accepted as diagnostic markers of sarcoidosis and other interstitial lung diseases in most Western countries, in contrast to Japan, where such measurements are routinely used in various clinical settings.

## Conclusions

This study has shown that the molecular structural variants of KL-6/MUC1 and its leakage behavior affect changes in serum levels of KL-6 in sarcoidosis. This information will assist in the interpretation of serum KL-6 levels in sarcoidosis. Further studies to examine the factors contributing to the variable increases in serum levels of KL-6 using molecular analysis in other ILDs would be warranted.

## Abbreviations

BAL: Bronchoalveolar lavage; BALF: Bronchoalveolar lavage fluid;  $D_{LCO}$ : Diffusing capacity of lung for carbon monoxide; ILDs: Interstitial lung diseases; KL-6: Krebs von den Lungen-6; MUC1: Mucin-1; SNP: Single nucleotide polymorphism; SP-D: Surfactant protein-D; VA: Alveolar volume; VC: Vital capacity; VNTR: Variable number of tandem repeat.

## Competing interests

The authors declare that they have no competing interests.

## Acknowledgments

We would like to thank Mr. Hitoshi Shibuya (Division of Laboratory and Transfusion Medicine, Hokkaido University Hospital), Dr. Takeshi Hattori, Dr. Kenichi Shimizu, Dr. Kaoruko Shimizu, Dr. Akira Isada (First Department of Medicine, Hokkaido University School of Medicine), Dr. Ayumu Takahashi (Division of Respiratory Medicine and Allergology, Aichi Medical University), and Prof. Takanori Moriyama (Division of Health Sciences, Graduate School of Health Sciences, Hokkaido University) for their helpful suggestions and technical support.

## Author details

<sup>1</sup>First Department of Medicine, Hokkaido University School of Medicine, Sapporo, Japan. <sup>2</sup>Division of Laboratory and Transfusion Medicine, Hokkaido University Hospital, Sapporo, Japan. <sup>3</sup>Division of Respiratory Medicine and Allergology, Aichi Medical University, Aichi, Japan. <sup>4</sup>First Department of Medicine, Hokkaido University School of Medicine, North 15, West 7, Kita-ku, Sapporo, 060-8638, Japan.

## Authors' contributions

MS, YN, SK, MN contributed to the study design, data analysis, data collection, data interpretation, figures and writing of the manuscript. CS and KM contributed to the study design, data interpretation, and writing of the manuscript. EY contributed to sample collection and interpretation of the data and writing of the manuscript. All authors have read and approved the final manuscript.

Received: 21 February 2012 Accepted: 31 May 2012

Published: 31 May 2012

## References

1. Kohno N, Akiyama M, Kyoizumi S, Hakoda M, Kobuke K, Yamakido M: Detection of soluble tumor-associated antigens in sera and effusions using novel monoclonal antibodies, KL-3 and KL-6, against lung adenocarcinoma. *Jpn J Clin Oncol* 1988, **18**(3):203-216.
2. Hirasawa Y, Kohno N, Yokoyama A, Inoue Y, Abe M, Hiwada K: KL-6, a human MUC1 mucin, is chemotactic for human fibroblasts. *Am J Respir Cell Mol Biol* 1997, **17**(4):501-507.
3. Hattstrup CL, Gendler SJ: Structure and function of the cell surface (tethered) mucins. *Annu Rev Physiol* 2008, **70**:431-457.
4. Brayman M, Thathiah A, Carson DD: MUC1: a multifunctional cell surface component of reproductive tissue epithelia. *Reprod Biol Endocrinol* 2004, **2**:4.

5. Ohtsuki Y, Fujita J, Hachisuka Y, Uomoto M, Okada Y, Yoshinouchi T, Lee GH, Furihata M, Kohno N: Immunohistochemical and immunoelectron microscopic studies of the localization of KL-6 and epithelial membrane antigen (EMA) in presumably normal pulmonary tissue and in interstitial pneumonia. *Med Mol Morphol* 2007, **40**(4):198–202.
6. Kohno N, Aways Y, Oyama T, Yamakido M, Akiyama M, Inoue Y, Yokoyama A, Hamada H, Fujioka S, Hiwada K: KL-6, a mucin-like glycoprotein, in bronchoalveolar lavage fluid from patients with interstitial lung disease. *Am Rev Respir Dis* 1993, **148**(3):637–642.
7. Goto K, Kodama T, Sekine I, Kakinuma R, Kubota K, Hojo F, Matsumoto T, Ohmatsu H, Ikeda H, Ando M, et al: Serum levels of KL-6 are useful biomarkers for severe radiation pneumonitis. *Lung Cancer* 2001, **34**(1):141–148.
8. Ohnishi H, Yokoyama A, Yasuhara Y, Watanabe A, Naka T, Hamada H, Abe M, Nishimura K, Higaki J, Ikezoe J, et al: Circulating KL-6 levels in patients with drug induced pneumonitis. *Thorax* 2003, **58**(10):872–875.
9. Sakamoto K, Taniguchi H, Kondoh Y, Johkoh T, Sumikawa H, Kimura T, Nishiyama O, Kato K, Kataoka K, Ono K, et al: Serum KL-6 in fibrotic NSIP: Correlations with physiologic and radiologic parameters. *Respir Med* 2010, **104**(1):127–133.
10. Kobayashi J, Kitamura S: Serum KL-6 for the evaluation of active pneumonitis in pulmonary sarcoidosis. *Chest* 1996, **109**(5):1276–1282.
11. Janssen R, Sato H, Grutters JC, Bernard A, van Velzen-Blad H, du Bois RM, van den Bosch JM: Study of Clara cell 16, KL-6, and surfactant protein-D in serum as disease markers in pulmonary sarcoidosis. *Chest* 2003, **124**(6):2119–2125.
12. Miyoshi S, Hamada H, Kadowaki T, Hamaguchi N, Ito R, Irifune K, Higaki J: Comparative evaluation of serum markers in pulmonary sarcoidosis. *Chest* 2010, **137**(6):1391–1397.
13. Honda K, Okada F, Ando Y, Mori H, Umeki K, Ishii H, Kadota J, Ando M, Miyazaki E, Kumamoto T: Comparison of pulmonary thin section CT findings and serum KL-6 levels in patients with sarcoidosis. *Br J Radiol* 2011, **84**(999):229–235.
14. Hunninghake GW, Costabel U, Ando M, Baughman R, Cordier JF, du Bois R, Eklund A, Kitaichi M, Lynch J, Rizzato G, et al: ATS/ERS/WASOG statement on sarcoidosis. American Thoracic Society/European Respiratory Society/World Association of Sarcoidosis and other Granulomatous Disorders. *Sarcoidosis Vasc Diffuse Lung Dis* 1999, **16**(2):149–173.
15. Ligtenberg MJ, Vos HL, Gennissen AM, Hilken J: Episialin, a carcinoma-associated mucin, is generated by a polymorphic gene encoding splice variants with alternative amino termini. *J Biol Chem* 1990, **265**(10):5573–5578.
16. Imbert Y, Foulks GN, Brennan MD, Jumblatt MM, John G, Shah HA, Newton C, Pouranfar F, Young WW Jr: MUC1 and estrogen receptor alpha gene polymorphisms in dry eye patients. *Exp Eye Res* 2009, **88**(3):334–338.
17. Janssen R, Kruit A, Grutters JC, Ruven HJ, Gerritsen WB, van den Bosch JM: The mucin-1 568 adenosine to guanine polymorphism influences serum Krebs von den Lungen-6 levels. *Am J Respir Cell Mol Biol* 2006, **34**(4):496–499.
18. Zhou Y, Yamaguchi E, Fukui Y, Konno S, Maeda Y, Kimata K, Nishimura M: Enhanced expression of interleukin-18 receptor alpha chain by CD4+ T cells in sarcoidosis. *Chest* 2005, **128**(4):2497–2503.
19. Shigemura M, Nasuhara Y, Konno S, Hattori T, Shimizu C, Matsuno K, Nishimura M: Levels of transferrin in bronchoalveolar lavage fluid in sarcoidosis. *Lung* 2010, **188**(2):151–157.
20. Ishikawa N, Mazur W, Toljamo T, Vuopala K, Ronty M, Horimasu Y, Kohno N, Kinnula VL: Ageing and long-term smoking affects KL-6 levels in the lung, induced sputum and plasma. *BMC Pulm Med* 2011, **11**:22.
21. Inoue Y, Barker E, Daniloff E, Kohno N, Hiwada K, Newman LS: Pulmonary epithelial cell injury and alveolar-capillary permeability in berylliosis. *Am J Respir Crit Care Med* 1997, **156**(1):109–115.
22. Abe M, Kufe D: Structural analysis of the DF3 human breast carcinoma-associated protein. *Cancer Res* 1989, **49**(11):2834–2839.
23. listed. Na, Suppl 1: Proceedings of the International Society for Oncodevelopmental Biology and Medicine (ISOBM) TD-4 International Workshop on Monoclonal Antibodies against MUC1. San Diego, California, November 17–23, 1996. *Tumour Biol* 1998, **19**:1–152.
24. Vinal LE, Pratt WS, Swallow DM: Detection of mucin gene polymorphism. *Methods Mol Biol* 2000, **125**:337–350.
25. Eklund A, Blaschke E: Relationship between changed alveolar-capillary permeability and angiotensin converting enzyme activity in serum in sarcoidosis. *Thorax* 1986, **41**(8):629–634.
26. Hermans C, Bernard A: Lung epithelium-specific proteins: characteristics and potential applications as markers. *Am J Respir Crit Care Med* 1999, **159**(2):646–678.
27. Taylor AE, Gaar KA Jr: Estimation of equivalent pore radii of pulmonary capillary and alveolar membranes. *Am J Physiol* 1970, **218**(4):1133–1140.
28. Conhaim RL, Eaton A, Staub NC, Heath TD: Equivalent pore estimate for the alveolar-airway barrier in isolated dog lung. *J Appl Physiol* 1988, **64**(3):1134–1142.
29. Swanson JA, Kern DF: Characterization of pulmonary endothelial charge barrier. *Am J Physiol* 1994, **266**(4 Pt 2):H1300–H1303.
30. Lai-Fook SJ, Brown LV: Effects of electric charge on hydraulic conductivity of pulmonary interstitium. *J Appl Physiol* 1991, **70**(5):1928–1932.
31. Noel-Georis I, Bernard A, Falmagne P, Wattiez R: Database of bronchoalveolar lavage fluid proteins. *J Chromatogr B Analyt Technol Biomed Life Sci* 2002, **771**(1–2):221–236.
32. Hilken J, Buijs F: Biosynthesis of MAM-6, an epithelial sialomucin. Evidence for involvement of a rare proteolytic cleavage step in the endoplasmic reticulum. *J Biol Chem* 1988, **263**(9):4215–4222.
33. listed. Na: NIH conference. Pulmonary sarcoidosis: a disease characterized and perpetuated by activated lung T-lymphocytes. *Ann Intern Med* 1981, **94**(1):73–94.
34. Drent M, van Velzen-Blad H, Diamant M, Hoogsteden HC, van den Bosch JM: Relationship between presentation of sarcoidosis and T lymphocyte profile. A study in bronchoalveolar lavage fluid. *Chest* 1993, **104**(3):795–800.
35. Grutters JC, Fellrath JM, Mulder L, Janssen R, van den Bosch JM, van Velzen-Blad H: Serum soluble interleukin-2 receptor measurement in patients with sarcoidosis: a clinical evaluation. *Chest* 2003, **124**(1):186–195.
36. Jones JG, Minty BD, Lawler P, Hulands G, Crawley JC, Veall N: Increased alveolar epithelial permeability in cigarette smokers. *Lancet* 1980, **1**(8159):66–68.
37. Rusznak C, Mills PR, Devalia JL, Sapsford RJ, Davies RJ, Lozewicz S: Effect of cigarette smoke on the permeability and IL-1beta and sICAM-1 release from cultured human bronchial epithelial cells of never-smokers, smokers, and patients with chronic obstructive pulmonary disease. *Am J Respir Cell Mol Biol* 2000, **23**(4):530–536.
38. Olivera DS, Boggs SE, Beenhouwer C, Aden J, Knall C: Cellular mechanisms of mainstream cigarette smoke-induced lung epithelial tight junction permeability changes in vitro. *Inhal Toxicol* 2007, **19**(1):13–22.
39. Honda Y, Kuroki Y, Matsuura E, Nagae H, Takahashi H, Akino T, Abe S: Pulmonary surfactant protein D in sera and bronchoalveolar lavage fluids. *Am J Respir Crit Care Med* 1995, **152**(6 Pt 1):1860–1866.
40. Leth-Larsen R, Garred P, Jensenius H, Meschi J, Hartshorn K, Madsen J, Tornøe I, Madsen HO, Sorensen G, Crouch E, et al: A common polymorphism in the SFTPD gene influences assembly, function, and concentration of surfactant protein D. *J Immunol* 2005, **174**(3):1532–1538.

doi:10.1186/1479-5876-10-111

**Cite this article as:** Shigemura et al.: Effects of molecular structural variants on serum Krebs von den Lungen-6 levels in sarcoidosis. *Journal of Translational Medicine* 2012 **10**:111.

**Submit your next manuscript to BioMed Central and take full advantage of:**

- Convenient online submission
- Thorough peer review
- No space constraints or color figure charges
- Immediate publication on acceptance
- Inclusion in PubMed, CAS, Scopus and Google Scholar
- Research which is freely available for redistribution

Submit your manuscript at  
www.biomedcentral.com/submit

