

RESEARCH

Open Access



A partitioned polygenic risk score reveals distinct contributions to psoriasis clinical phenotypes across a multi-ethnic cohort

Faye Orcales^{1*} , Sugandh Kumar¹, Audrey Bui^{1,2}, Chandler Johnson^{1,3}, Jared Liu¹, Zhi-Ming Huang¹ and Wilson Liao¹

Abstract

Psoriasis is a chronic, immune-mediated inflammatory skin disease associated with a polygenic mode of inheritance. There are few studies that explore the association of a psoriasis Polygenic Risk Score (PRS) with patient clinical characteristics, and to our knowledge there are no studies examining psoriasis PRS associations across different ethnicities. In this study, we used a multi-racial psoriasis cohort to investigate PRS associations with clinical phenotypes including age of onset, psoriatic arthritis, other comorbidities, psoriasis body location, psoriasis subtype, environmental triggers, and response to therapies. We collected patient data and Affymetrix genome-wide SNP data from a cohort of 607 psoriasis patients and calculated an 88-loci PRS (PRS-ALL), also partitioned between genetic loci within the HLA region (PRS-HLA; 11 SNPs) and loci outside the HLA region (PRS-NoHLA; 77 SNPs). We used t-test and logistic regression to analyze the association of PRS with clinical phenotypes. We found that PRS-HLA and PRS-noHLA had differing effects on psoriasis age of onset, psoriatic arthritis, psoriasis located on the ears, genitals, nails, soles of feet, skin folds, and palms, skin injury as an environmental trigger, cardiovascular comorbidities, and response to phototherapy. In some cases these PRS associations were ethnicity specific. Overall, these results show that the genetic basis for clinical manifestations of psoriasis are driven by distinct HLA and non-HLA effects, and that these PRS associations can be dependent on ethnicity.

Introduction

Psoriasis is a chronic immune-mediated skin disease that affects roughly 3.6% of European ancestry groups, 2.5% of Asians, 1.9% of Hispanics, 1.5% of African Americans, and 3.1% of other/multiracial groups [1]. 90% of individuals with psoriasis experience it in the form of plaque psoriasis, also known as psoriasis vulgaris [2], and roughly 6–42% of psoriasis patients also experience psoriatic

arthritis [3]. Psoriasis can negatively impact quality of life of those affected [4]. The prevalence of depression and anxiety in psoriasis patients is 20% and 21%, respectively [5]. Psoriasis is also known to be comorbid with various diseases including cardiovascular diseases, diabetes, metabolic syndrome, rheumatic conditions, and autoimmune diseases [4, 6–10].

The pathogenesis of psoriasis is characterized by dysregulation of the IL-17/23 axis and of various cell types including T-cells, dendritic cells, keratinocytes, and stromal cells [11]. The genetic contribution to psoriasis susceptibility has been estimated to be about 70% [12]. GWAS studies have found more than 70 susceptibility loci in the European population [13]. The *HLA-C*06:02* allele is believed to contribute the largest genetic affect

*Correspondence:

Faye Orcales

Faye.Orcales@ucsf.edu

¹Department of Dermatology, University of California San Francisco, San Francisco, CA, USA

²Lake Erie College of Osteopathic Medicine, Bradenton, FL, USA

³Medical College of Georgia, Augusta University, Augusta, GA, USA



© The Author(s) 2024. **Open Access** This article is licensed under a Creative Commons Attribution 4.0 International License, which permits use, sharing, adaptation, distribution and reproduction in any medium or format, as long as you give appropriate credit to the original author(s) and the source, provide a link to the Creative Commons licence, and indicate if changes were made. The images or other third party material in this article are included in the article's Creative Commons licence, unless indicated otherwise in a credit line to the material. If material is not included in the article's Creative Commons licence and your intended use is not permitted by statutory regulation or exceeds the permitted use, you will need to obtain permission directly from the copyright holder. To view a copy of this licence, visit <http://creativecommons.org/licenses/by/4.0/>.

to psoriasis susceptibility. *HLA-C*06:02* is associated with earlier onset of disease and increased likelihood of association with streptococcal throat infection [14–16]. While the discovery of psoriasis genetic variants has helped us further understand many genetic mechanisms in the pathogenesis of psoriasis, most genotype-phenotype studies have been conducted in European populations. Thus, we currently lack an understanding of the impact of psoriasis genetic variants on clinical features in non-European populations.

Polygenic Risk Scores (PRS) have increasingly been used to study various diseases with a polygenic mode of inheritance, like psoriasis. However, there are few studies that explore the association of psoriasis PRS with patient clinical characteristics, and there are no studies looking at PRS associations across different ethnicities. We calculated an 88-loci PRS on this multi-racial cohort, also subdivided between loci within the HLA region (HLA-PRS; 11 SNPs) and loci outside the HLA region (Non-HLA-PRS; 77 SNPs). These 88 loci were derived from the largest psoriasis GWAS published to date [13]. We also calculated *HLA-C*06:02* dosages for each patient to look at clinical associations with this specific allele. In our study, we sought to investigate PRS association with clinical phenotypes including age of onset, psoriatic arthritis, psoriasis body location, psoriasis subtype, environmental triggers for psoriasis, co-morbidities, and treatment response, all across a multi-ethnic cohort.

Methodology

Data collection

We collected patient-reported data, physician-reported data, and Affymetrix United Kingdom Biobank Axiom array SNP data from a cohort of 607 psoriasis patients enrolled at the University of California San Francisco (UCSF). The cohort consists of 381 patients with European ancestry, 148 Asian, and 78 Mixed/Non-European. Their mean age is 47 (SD=17), with 46% being female and 54% male. Clinical data collected included maternal and paternal ethnicity, body mass index (BMI), age of onset, locations where psoriasis has ever presented, psoriasis type, triggers for psoriasis, co-morbidities, and response to treatments. Psoriatic arthritis (PsA) status was defined as follows: No PsA=No patient-reported joint pain and never diagnosed with PsA by a physician; Possible PsA=Patient-reported joint pain but never diagnosed with PsA by a physician; Confirmed PsA=Patient-reported joint pain and confirmed diagnosis of PsA by a rheumatologist. A complete list of clinical data fields collected can be found in Additional file 1: Supplementary Table S1. All patients were clinically diagnosed by a board-certified dermatologist and completed a written consent form for use of their data and biosamples under UCSF IRB#10–0230.

Quality assessment and genotyping process

Before conducting polygenic risk calculations, we performed quality assessment of the genetic data in this study. All DNA samples were genotyped using the Affymetrix United Kingdom Biobank Axiom Array from ThermoFisher, employing the GeneTitan Multi-Channel Instrument by Applied Biosystems for genotyping. Subsequently, all genotyped variants underwent processing using Analysis Power Tools 2.10.2.2, which was provided by Affymetrix (source: <https://www.affymetrix.com/support/developer/powertools/changelog/index.html>). To ensure the high quality of the genotyped samples, we examined their DNA quality through a call rate exceeding 97% and Dish QC for genotyping quality threshold 82%. The resulting genotype variants were further analyzed using ‘snppflip’ (source: <https://github.com/biocore-ntnu/snppflip>) with the GRCh37 (also known as hg19) build of the human genome reference sequence (source: <http://hgdownload.cse.ucsc.edu/goldenPath/hg19/bigZips/hg19.fa.gz>) to address SNP flipping, reversal, and removal of ambiguous-stranded SNPs. Finally, the remaining sites were sorted using Plink 2.0 (source: www.cog-genomics.org/plink/2.0/) following the methodology outlined by Chang et al. in 2015 [17]. Next, all the genotyped data from individuals of different ethnicities was used for imputation on all 22 chromosomes for further polygenic risk analysis.

Imputation of non-genotyped variants using the michigan imputation server

All genotyped data from samples representing three different ethnicities underwent imputation using the Michigan Imputation Server (source: <https://imputationserver.sph.umich.edu>) to impute non-genotyped variants with a reference dataset. Specifically, we employed the 1000G Phase 3 v5 reference panel based on GRCh37, with the rsqFilter deactivated, and utilized Eagle v2.4 for phasing within the European (EUR), Asian, and African populations. To ensure consistency and compatibility, the positions of the imputed SNPs were translated to GRCh38 coordinates using the ‘LiftOverVcf’ command available in Picard version 2.23.3 (source: <http://broadinstitute.github.io/picard/>). The quality of imputation was rigorously assessed and demonstrated a high level of accuracy with an R^2 value exceeding 0.7, consistent with the recommendation from prior studies [18, 19]. Additional information about these SNPs is available in Additional file 1: Supplementary TableS2.

SNP selection for polygenic risk score calculation

We used a total of 88 psoriasis susceptibility SNPs and their respective odds ratios (ORs) obtained from the largest published Genome-Wide Association Study (GWAS) meta-analysis of SNPs achieving genome-wide

significance ($p < 5.0E-08$) [13]. The details of these selected SNPs can be found in Additional file 1: Supplementary Table S2. Further information on allele frequencies and imputation can be found in Additional file 2: Supplementary Tables S3-S4. This meta-analysis comprised data from six GWAS cohorts, one Exomechip study, and one Immunochip dataset, all focused on individuals of European ancestry. Importantly, many of the psoriasis loci identified in this study contained secondary independent signals. To accurately represent the effect sizes of the primary signals, adjustments were made by calculating the ORs while conditioning on the presence of other independent signals within the same genomic locus. This approach ensured that the independent contribution of each signal to the development of psoriasis was properly estimated, accounting for any linkage disequilibrium (LD) within the genomic structure. Furthermore, considering the notably high LD associated with the Human Leukocyte Antigen (HLA) loci, a pairwise linkage disequilibrium analysis was conducted to assess the LD between the 11 HLA SNPs across a European population. This analysis was performed using the LD-matrix Tool within LD-link, as previously described by Machiela and Chanock in 2015 [20]. The results of this analysis confirmed that there was low LD between the 11 selected HLA SNPs, with 93% of the pairwise LD comparisons exhibiting an R^2 value of less than 0.1.

Polygenic risk score calculations

As previously described, we computed the Polygenic Risk Score (PRS) by integrating the effects of all risk variants, considering their respective effect sizes, which represent the strength of the association between a genetic risk variant and the trait or condition of interest [21]. Further, our polygenic risk calculations were performed in three sets: (1) encompassing all 88 independent SNPs, (2) focusing on HLA SNPs (comprising 11 SNPs), and (3) focusing on non-HLA SNPs (comprising 77 SNPs). HLA SNPs were identified as those within the HLA region (located at chr6:28510120–33480577 in GRCh38). The separation of calculations into HLA and non-HLA subsets was motivated by the different genetic mechanisms involved, with HLA loci affecting antigen presentation and non-HLA loci generally affecting innate and adaptive immune activation. These polygenic risk calculations were carried out using Plink-2.0 tools using these options (Plink2 --vcf CombinedVcfFile 'dosage=HDS' --score SnpReference 4 6 7 'no-mean-imputation' 'head-read' 'list-variants' --out CurrentOutputScoresPrefix).

HLA-C*06:02 dosage

Moreover, we quantified the dosage of *HLA-C*06:02* across the various ethnicities within our sample population. To achieve this, we conducted imputation for all

genotyped variants located on chromosome 6 for each of the samples, through the MIS server with the same configuration employed for the PRS calculation.

Association testing

We used t-test and generalized logistic/linear regression in R (v4.1.0) to analyze differences between clinical phenotypes. For the logistic regression analyses, three covariate terms were added to the equation (clinical phenotype ~ Age + Sex + Smoking Status + PRS). Metabolic syndrome was defined by a patient fulfilling at least 3 out of 5 criteria (BMI over 30, high blood pressure, high cholesterol, high triglycerides, and diabetes).

Results

Age of psoriasis onset

Average age of onset was calculated for each PRS-ALL quartile across all ethnicity cohorts. The combined cohort, European cohort, and Asian cohort showed a consistent decreasing trend (Fig. 1). The combined cohort's first quartile had an average age of onset of 34.19 (SD=18.97), and its fourth quartile had an average age of onset of 24.20 (SD=14.61). The European cohort's first quartile had an average age of onset of 33.58 (SD=19.17), and its fourth quartile had an average age of onset of 25.35 (SD=15.52). The Asian cohort's first quartile had an average age of onset of 36.62 (SD=18.12), and its fourth quartile had an average age of onset of 22.00 (SD=8.63). We also ran a mean-comparison t-test between each quartile group and each ethnic cohort. The combined ethnicity cohort showed that patients in PRS-ALL Q2, Q3, and Q4 all had significantly lower mean scores than patients in Q1. In the White and Asian cohorts, patients in PRS-ALL Q3 and Q4 had significantly lower mean scores than patients in Q1 (Fig. 1). These results indicate that increased total genetic burden as indicated by increasing PRS-ALL is associated with lower age of onset, with a magnified effect in the Asian cohort (Q4-Q1 difference ~ 15 years) compared to European cohort (Q4-Q1 difference ~ 8 years).

To understand the contribution of HLA versus non-HLA SNPs in driving this effect, the same analysis was done using PRS-HLA, *HLA-C*06:02* status, and PRS-NoHLA. Results with PRS-HLA showed a consistent decreasing trend only in the combined and the European cohorts (Additional file 3: Figure S1). *HLA-C*06:02*-positive patients had significantly earlier average age of onsets for all ethnicity cohorts (Additional file 3: Figure S2). Results with PRS-NoHLA showed a decreasing trend with smaller magnitude starting at Q2 for the combined, European, and Other/Mixed cohort (Additional file 3: Figure S3). This indicates that HLA SNPs predominantly drive age of onset with the largest contribution from

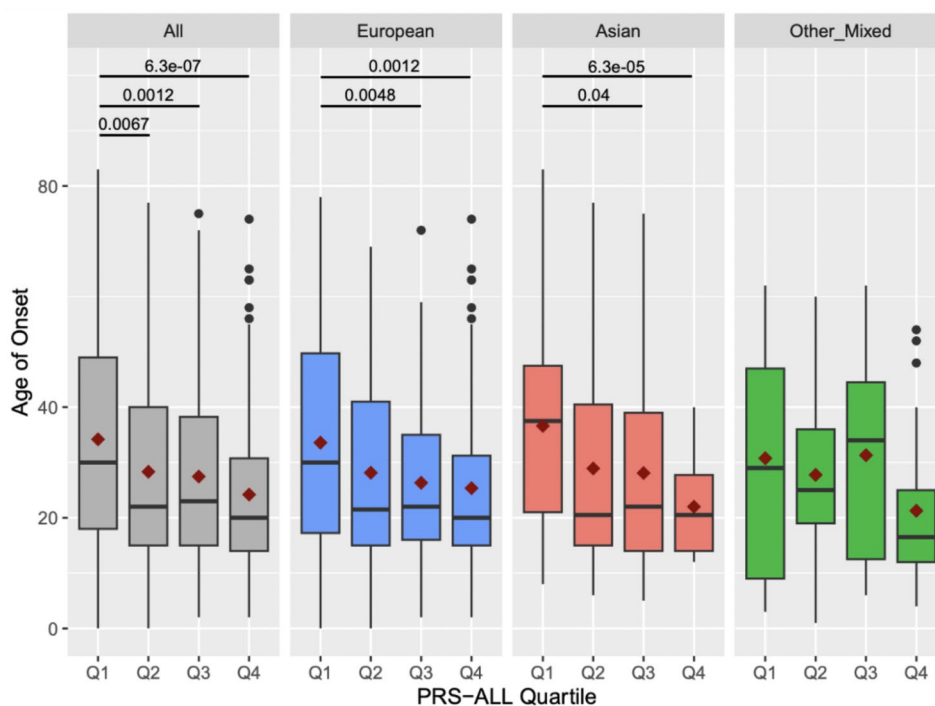


Fig. 1 Age of psoriasis onset according to PRS-ALL quartiles. Each box plot is color-coded to show the age of onset distribution for each ethnicity: all ethnicities combined (gray), European (blue), Asian (red), other/mixed (green). The red diamond in a box plot represents the mean age of onset for that quartile group and the horizontal black line represents the median

*HLA-C*06:02*, while non-HLA SNPs contribute a more moderate effect on age of onset.

Psoriatic arthritis

To understand the contribution of PRS to psoriatic arthritis, a t-test was used to compare mean PRS between different psoriatic arthritis (PsA) phenotypes (no PsA, possible PsA, confirmed PsA). Comparisons tested with PRS-ALL and PRS-HLA scores were nonsignificant. However, PRS-NoHLA scores were found to be significantly higher in patients with confirmed PsA compared to patients with no PsA. This was seen in the combined cohort, and separately in the European and Asian cohorts (Fig. 2).

After excluding patients with possible PsA, logistic regression was performed to evaluate the effect of PRS on the outcomes “No PsA” and “Confirmed PsA”. Similar to the mean comparison results, PRS-ALL and PRS-HLA had nonsignificant results. PRS-NoHLA was significantly associated to PsA in the combined and European cohorts (Table 1). Together, the mean comparison and logistic regression results suggest that PRS-NoHLA is driving PsA, primarily in the European cohort.

Although PRS-HLA had nonsignificant results, logistic regression results with *HLA-C*06:02* dosage revealed a significant protective association in the combined and European cohort. This indicates that *HLA-C*06:02* may

be protective for PsA amongst a cohort of individuals with psoriasis.

Body locations ever affected by psoriasis

We evaluated the effect of PRS on body locations ever affected by psoriasis using logistic regression (Table 2). PRS-HLA was associated with psoriasis on the scalp in the European cohort but was protective against psoriasis on the genitals and on the nails in the Asian cohort. PRS-HLA was also protective against psoriasis appearing on the palms of hands for the combined, European, and Asian cohorts.

The *HLA-C*06:02* allele had similar results to PRS-HLA for nail psoriasis, primarily in the Asian cohort. This indicates that this allele contributes the greatest effect in protection against psoriasis on the nails, for the Asian cohort.

PRS-NoHLA was significantly associated with psoriasis presence on the genitals, skin folds, ears, nails, and soles of feet. For all of these locations, PRS-NoHLA seemed to be driving psoriasis primarily in the European cohort. For nail psoriasis, PRS-NoHLA seemed to drive this mainly in the European and Asian cohorts.

Facial psoriasis was significantly associated with both PRS-ALL and PRS-NoHLA, only for the Other/Mixed cohort.

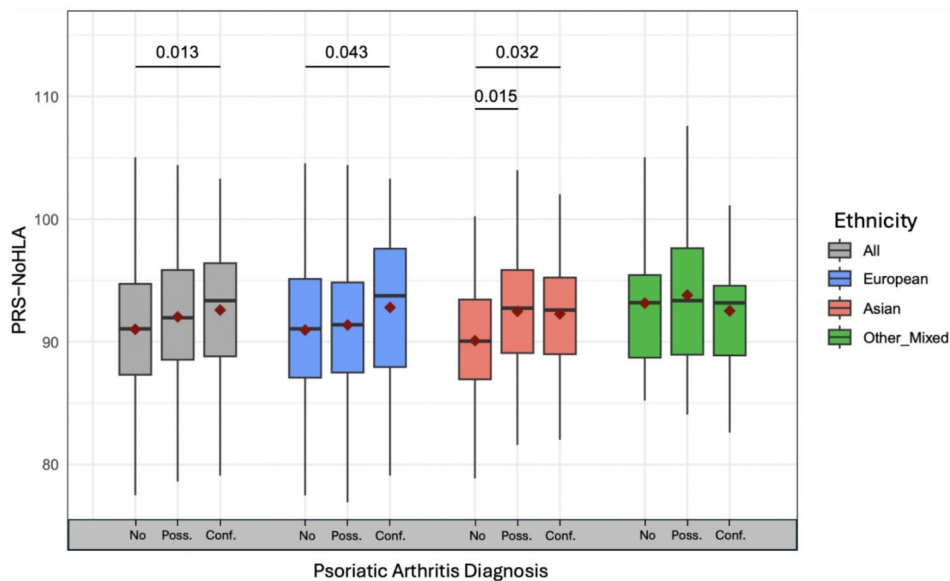


Fig. 2 Psoriatic arthritis in relation to PRS-noHLA. Each box plot summarizes the PRS-NoHLA range for each ethnicity and PsA diagnosis group: all ethnicities combined (gray), European (blue), Asian (red), other/mixed (green). The x-axis labels correspond to each PsA diagnosis group: patients with no PsA (No), with possible PsA (Poss.), and with confirmed PsA (Conf.). The red diamond in a box plot represents the mean PRS-NoHLA for that diagnosis group and the horizontal black line represents the median. Mean comparison (t-test) p-values given at the top of plot, with lines indicating specific comparisons. Only significant p-values (<0.05) are shown

Table 1 Effects of PRS on psoriatic arthritis. Table contains odds ratios (ORs) and 95% confidence intervals calculated using a logistic regression model adjusted for age, sex, and smoking covariates. Cells with bolded values indicate significant p-values < 0.05, (+ if $p < 0.05$, ++ if $p < 0.01$)

Diagnosis	Ethnicity (n=No, Confirmed)	PRS-ALL OR (95% CI)	PRS-NoHLA OR (95% CI)	PRS-HLA OR (95% CI)	HLA-C*06:02 OR (95% CI)
PsA	European (200, 56)	1.04 (0.99–1.09)	+ 1.07 (1.01–1.13)	0.97 (0.88–1.06)	+ 0.51 (0.27–0.94)
	Asian (67, 35)	1.07 (0.98–1.18)	1.09 (0.99–1.19)	0.96 (0.85–1.10)	0.31 (0.09–1.07)
	Other/Mixed (30, 13)	0.99 (0.86–1.13)	0.97 (0.83–1.12)	1.05 (0.82–1.36)	1.19 (0.21–6.62)
	All (297, 104)	1.03 (0.99–1.07)	+ 1.06 (1.01–1.10)	0.96 (0.89–1.03)	++ 0.45 (0.27–0.75)

Psoriasis subtype

Logistic regression analyses were also performed to evaluate the effect of PRS on psoriasis subtype (Table 3). PRS-HLA had a protective effect on pustular and erythrodermic psoriasis across the entire cohort.

The *HLA-C*06:02* allele had similar results to PRS-HLA for both pustular and erythrodermic psoriasis. However, unlike PRS-HLA it did appear to drive guttate psoriasis across the entire cohort. This indicates that this allele contributes the greatest effect in protection against pustular and erythrodermic psoriasis, along with driving guttate psoriasis for the combined cohort.

Both PRS-ALL and PRS-NoHLA drove plaque psoriasis only in the Asian cohort.

Environmental triggers for psoriasis

Logistic regression analyses were also performed to evaluate the effect of PRS on environmental triggers for psoriasis (Table 4). Both PRS-ALL and PRS-HLA had a significant effect on the strep throat and winter season

triggers. PRS-HLA drove strep throat as a psoriasis trigger in just the combined and Other/Mixed cohorts. For the winter season trigger, PRS-HLA showed a driving effect for all cohorts except the Asian cohort. PRS-HLA had a significant protective association with the medication trigger, only in the Asian cohort.

The *HLA-C*06:02* allele had similar results to PRS-HLA for the strep throat trigger, only in the combined cohort. However, unlike PRS-HLA, *HLA-C*06:02* had a significant association with strep throat in the European cohort. This indicates that this allele contributes the greatest effect in driving strep throat as a trigger primarily within the European cohort. *HLA-C*06:02* also showed a significant association with stress (physical, emotional, psychological) that was not shown in PRS-HLA. It seemed to be driving stress, primarily in the other/mixed cohort. This may indicate that primarily *HLA-C*06:02* SNPs are driving stress as a psoriasis trigger in non-European and non-Asian individuals.

Table 2 Effects of PRS on body locations in which psoriasis has ever occurred. P-values were calculated using a logistic regression model adjusted for age, sex, and smoking covariates. Cells with bolded values indicate significant p-values < 0.05, (+ if $p < 0.05$, ++ if $p < 0.01$, +++ if $p < 0.001$)

Location	Ethnicity (n = unchecked, checked)	PRS-ALL OR (95% CI)	PRS-NoHLA OR (95% CI)	PRS-HLA OR (95% CI)	HLA-C*06:02 OR (95% CI)
Scalp	European (93, 271)	1.03 (0.99–1.06)	1.01 (0.97–1.05)	+ 1.09 (1.01–1.18)	1.08 (0.67–1.73)
	Asian (22, 123)	1.02 (0.93–1.12)	1.07 (0.97–1.17)	0.89 (0.77–1.03)	0.70 (0.24–2.05)
	Other/Mixed (10, 58)	1.07 (0.95–1.21)	1.08 (0.93–1.24)	1.04 (0.81–1.33)	2.65 (0.50–13.92)
	All (125, 452)	1.03 (0.99–1.06)	1.02 (0.99–1.06)	1.04 (0.97–1.10)	1.01 (0.67–1.51)
Ears	European (145, 219)	+ 1.04 (1.01–1.07)	+ 1.04 (1.01–1.08)	1.03 (0.96–1.10)	0.92 (0.61–1.40)
	Asian (63, 82)	1.05 (0.98–1.12)	1.06 (0.99–1.13)	0.97 (0.87–1.08)	1.77 (0.77–4.10)
	Other/Mixed (25, 43)	0.98 (0.89–1.06)	0.96 (0.87–1.06)	1.02 (0.86–1.23)	1.35 (0.46–3.96)
	All (233, 344)	+ 1.03 (1.01–1.06)	+ 1.04 (1.01–1.07)	1.02 (0.97–1.07)	1.14 (0.81–1.60)
Arms/ Legs	European (58, 306)	0.99 (0.95–1.03)	0.97 (0.92–1.01)	1.08 (0.99–1.18)	1.36 (0.76–2.42)
	Asian (18, 127)	1.00 (0.91–1.11)	1.07 (0.96–1.18)	0.86 (0.73–1.00)	0.56 (0.19–1.67)
Face	Other/Mixed (9, 59)	0.96 (0.84–1.10)	0.93 (0.80–1.07)	1.12 (0.83–1.49)	8.27 (0.65–105.85)
	All (85, 492)	0.99 (0.96–1.03)	0.98 (0.94–1.02)	1.02 (0.95–1.10)	1.21 (0.75–1.96)
	European (220, 144)	+ 1.03 (1.00–1.06)	1.03 (0.99–1.07)	1.06 (0.99–1.13)	1.18 (0.78–1.80)
	Asian (74, 71)	0.95 (0.89–1.02)	0.98 (0.91–1.04)	0.95 (0.84–1.06)	1.31 (0.57–3.02)
Genitals	Other/Mixed (41, 27)	++ 1.15 (1.04–1.28)	++ 1.17 (1.04–1.31)	1.07 (0.89–1.29)	0.99 (0.35–2.81)
	All (335, 242)	1.02 (0.99–1.05)	1.02 (0.99–1.05)	1.02 (0.97–1.07)	1.11 (0.79–1.56)
	European (246, 118)	++ 1.05 (1.01–1.08)	+ 1.05 (1.01–1.09)	1.07 (0.99–1.14)	0.97 (0.63–1.49)
	Asian (109, 36)	1.02 (0.94–1.10)	1.07 (0.99–1.16)	+ 0.86 (0.75–0.99)	0.36 (0.12–1.15)
Nails (pits/plaque)	Other/Mixed (45, 23)	1.01 (0.93–1.11)	1.02 (0.93–1.13)	0.98 (0.81–1.18)	0.97 (0.34–2.80)
	All (400, 177)	++ 1.04 (1.01–1.07)	++ 1.05 (1.02–1.08)	1.03 (0.97–1.09)	0.94 (0.66–1.35)
	European (234, 130)	+ 1.03 (1.00–1.07)	+ 1.04 (1.00–1.08)	1.02 (0.96–1.09)	0.76 (0.49–1.16)
	Asian (81, 64)	1.01 (0.94–1.08)	+ 1.08 (1.01–1.16)	++ 0.83 (0.73–0.93)	++ 0.20 (0.07–0.56)
Palms of hands	Other/Mixed (41, 27)	0.98 (0.90–1.07)	0.99 (0.90–1.10)	0.93 (0.77–1.13)	1.36 (0.46–4.06)
	All (356, 221)	1.02 (0.99–1.05)	++ 1.04 (1.01–1.07)	0.96 (0.91–1.01)	++ 0.61 (0.43–0.87)
	European (296, 68)	0.97 (0.94–1.01)	0.99 (0.95–1.04)	++ 0.89 (0.81–0.97)	+ 0.51 (0.29–0.90)
	Asian (109, 36)	1.00 (0.93–1.08)	1.06 (0.98–1.14)	+ 0.85 (0.75–0.98)	0.80 (0.31–2.08)
Soles of feet	Other/Mixed (58, 10)	1.02 (0.91–1.15)	1.03 (0.90–1.17)	1.01 (0.80–1.28)	1.47 (0.38–5.72)
	All (463, 114)	0.98 (0.95–1.01)	1.01 (0.97–1.04)	+++ 0.88 (0.82–0.94)	+ 0.59 (0.37–0.92)
	European (303, 61)	+ 1.05 (1.00–1.09)	+ 1.06 (1.01–1.12)	1.01 (0.92–1.10)	0.95 (0.54–1.65)
	Asian (114, 31)	0.99 (0.91–1.07)	1.02 (0.94–1.11)	0.90 (0.79–1.03)	0.45 (0.14–1.41)
Armpit/ Groin/ Skin folds	Other/Mixed (62, 6)	1.13 (0.97–1.31)	1.12 (0.94–1.33)	1.15 (0.86–1.53)	6.35 (0.99–40.53)
	All (479, 98)	1.03 (0.99–1.06)	+ 1.05 (1.01–1.09)	0.97 (0.91–1.04)	0.86 (0.55–1.35)
	European (231, 133)	++ 1.04 (1.01–1.08)	++ 1.05 (1.01–1.09)	1.03 (0.96–1.10)	1.08 (0.71–1.64)
Skin folds	Asian (87, 58)	1.01 (0.94–1.08)	1.05 (0.98–1.12)	0.90 (0.80–1.01)	0.56 (0.24–1.33)
	Other/Mixed (45, 23)	1.04 (0.94–1.14)	1.07 (0.96–1.18)	0.93 (0.77–1.13)	0.75 (0.26–2.18)
	All (363, 214)	++ 1.04 (1.01–1.06)	++ 1.05 (1.02–1.08)	0.99 (0.94–1.04)	0.93 (0.66–1.31)

PRS-NoHLA was significantly associated with skin injury (Koebner phenomenon), and summer season (sunlight). It was associated with these psoriasis triggers, mostly in the European cohort.

PRS-ALL, PRS-NoHLA, and PRS-HLA all seemed to drive Winter season as a trigger for psoriasis, primarily within the European cohort.

Psoriasis co-morbidities

Logistic regression analyses were also performed to evaluate the effect of PRS on co-morbidities (Table 5). PRS-HLA had significant negative associations with high blood pressure and eczema. For high blood pressure

this was primarily seen in the European cohort, and for eczema this was seen mostly in the Asian cohort.

Like PRS-HLA, *HLA-C*06:02* was found to be protective against high blood pressure mainly in the European cohort. This indicates that the *HLA-C*06:02* allele contributed the greatest effect in protecting against high blood pressure.

PRS-ALL and PRS-NoHLA seemed to drive metabolic syndrome for the combined and Other/Mixed cohorts.

Treatment response

Logistic regression analyses were also performed to evaluate the effect of PRS on treatment response outcomes

Table 3 Effects of PRS on types of psoriasis. P-values were calculated using a logistic regression model adjusted for age, sex, and smoking covariates. Cells with bolded values indicate significant p-values < 0.05, (+ if $p < 0.05$, ++ if $p < 0.01$)

Type	Ethnicity (n = unchecked, checked)	PRS-ALL OR (95% CI)	PRS-NoHLA OR (95% CI)	PRS-HLA OR (95% CI)	HLA-C*06:02 OR (95% CI)
Plaque	European (67, 297)	0.98 (0.94–1.02)	0.98 (0.94–1.02)	0.98 (0.91–1.07)	0.75 (0.45–1.24)
	Asian (27, 118)	+ 1.10 (1.00–1.20)	++ 1.13 (1.03–1.23)	0.92 (0.80–1.06)	0.72 (0.27–1.93)
	Other/Mixed (17, 51)	0.97 (0.87–1.07)	1.02 (0.91–1.15)	0.81 (0.65–1.01)	0.47 (0.15–1.49)
	All (111, 466)	0.99 (0.96–1.02)	1.00 (0.97–1.04)	0.96 (0.90–1.02)	0.73 (0.49–1.10)
Guttate	European (261, 103)	1.03 (0.99–1.07)	1.02 (0.98–1.06)	1.07 (0.99–1.15)	1.45 (0.92–2.28)
	Asian (95, 50)	1.00 (0.93–1.07)	0.99 (0.92–1.06)	1.02 (0.91–1.14)	2.02 (0.89–4.62)
	Other/Mixed (48, 20)	0.97 (0.89–1.07)	0.93 (0.84–1.04)	1.12 (0.93–1.35)	2.71 (0.91–8.04)
	All (404, 173)	1.01 (0.99–1.04)	1.00 (0.97–1.03)	1.05 (0.99–1.11)	+ 1.52 (1.07–2.16)
Pustular	European (352, 12)	0.99 (0.91–1.08)	1.03 (0.93–1.14)	0.88 (0.73–1.07)	0.37 (0.10–1.44)
	Asian (134, 11)	0.96 (0.84–1.09)	1.04 (0.92–1.19)	0.80 (0.64–1.01)	0.49 (0.10–2.53)
	Other/Mixed (64, 4)	0.90 (0.74–1.11)	0.97 (0.78–1.20)	0.74 (0.46–1.18)	0.42 (0.04–4.29)
	All (550, 27)	0.97 (0.92–1.04)	1.03 (0.97–1.11)	++ 0.80 (0.70–0.92)	+ 0.33 (0.13–0.86)
Erythrodermic	European (359, 5)	0.97 (0.86–1.10)	0.98 (0.85–1.14)	0.89 (0.65–1.21)	0.00 (0.00-Inf)
	Asian (139, 6)	1.00 (0.84–1.19)	1.17 (0.97–1.41)	+ 0.60 (0.40–0.91)	0.00 (0.00-Inf)
	Other/Mixed (64, 4)	0.93 (0.77–1.13)	0.98 (0.81–1.20)	0.76 (0.48–1.20)	1.03 (0.09–12.09)
	All (562, 15)	0.98 (0.90–1.06)	1.05 (0.96–1.15)	++ 0.75 (0.61–0.91)	+ 0.12 (0.02–0.96)
Inverse (Armpit/ Groin)	European (331, 33)	0.97 (0.91–1.03)	0.99 (0.92–1.06)	0.89 (0.78–1.03)	0.55 (0.21–1.45)
	Asian (137, 8)	0.94 (0.72–1.22)	1.01 (0.76–1.34)	0.85 (0.56–1.31)	1.42 (0.10–19.39)
	Other/Mixed (63, 5)	1.00 (0.00-Inf)	1.00 (0.00-Inf)	1.00 (0.00-Inf)	1.00 (0.00-Inf)
	All (531, 46)	0.97 (0.91–1.03)	0.99 (0.92–1.06)	0.90 (0.79–1.03)	0.70 (0.29–1.71)

Table 4 Effects of PRS on environmental triggers for psoriasis. P-values were calculated using a logistic regression model adjusted for age, sex, and smoking covariates. Cells with bolded values indicate significant p-values < 0.05, (+ if $p < 0.05$, ++ if $p < 0.01$, +++ if $p < 0.001$)

Environmental Trigger	Ethnicity (n = unchecked, checked)	PRS-ALL OR (95% CI)	PRS-NoHLA OR (95% CI)	PRS-HLA OR (95% CI)	HLA-C*06:02 OR (95% CI)
Stress (Physical, Emotional, Psychological)	European (118, 246)	1.03 (0.99–1.06)	1.03 (0.99–1.07)	1.04 (0.97–1.11)	1.11 (0.71–1.72)
	Asian (35, 110)	1.05 (0.96–1.13)	1.04 (0.96–1.13)	1.02 (0.89–1.16)	1.42 (0.47–4.31)
	Other/Mixed (17, 51)	1.02 (0.93–1.13)	1.00 (0.90–1.12)	1.10 (0.89–1.36)	+ 6.16 (1.12–33.89)
	All (170, 407)	+ 1.03 (1.00–1.06)	1.03 (0.99–1.06)	1.03 (0.97–1.09)	1.19 (0.81–1.73)
Skin Injury	European (260, 104)	+++ 1.07 (1.03–1.10)	+++ 1.09 (1.05–1.14)	1.00 (0.93–1.07)	0.83 (0.52–1.30)
	Asian (115, 30)	1.02 (0.93–1.10)	1.00 (0.92–1.09)	1.04 (0.91–1.18)	1.05 (0.40–2.76)
	Other/Mixed (51, 17)	0.97 (0.88–1.07)	0.95 (0.85–1.07)	1.01 (0.84–1.23)	1.47 (0.48–4.48)
	All (426, 151)	++ 1.05 (1.02–1.08)	++ 1.06 (1.02–1.09)	1.02 (0.96–1.08)	1.01 (0.70–1.47)
Strep Throat	European (323, 41)	1.03 (0.98–1.08)	1.02 (0.96–1.08)	1.08 (0.97–1.20)	++ 2.43 (1.26–4.69)
	Asian (134, 11)	1.03 (0.90–1.17)	0.98 (0.87–1.11)	1.11 (0.92–1.35)	3.08 (0.84–11.37)
	Other/Mixed (60, 8)	1.16 (0.99–1.35)	1.01 (0.88–1.17)	++ 1.73 (1.20–2.51)	+ 5.99 (1.25–28.63)
	All (517, 60)	+ 1.05 (1.00–1.10)	1.01 (0.96–1.06)	++ 1.15 (1.05–1.25)	+++ 2.93 (1.74–4.95)
Winter Season	European (152, 212)	++ 1.05 (1.02–1.08)	+ 1.04 (1.01–1.08)	++ 1.10 (1.03–1.18)	1.36 (0.89–2.07)
	Asian (67, 78)	0.99 (0.92–1.06)	0.97 (0.90–1.04)	1.05 (0.93–1.18)	1.19 (0.50–2.83)
	Other/Mixed (36, 32)	0.99 (0.91–1.08)	0.93 (0.84–1.03)	+ 1.22 (1.01–1.48)	2.85 (0.92–8.80)
	All (255, 322)	++ 1.03 (1.01–1.06)	1.02 (0.99–1.05)	+++ 1.10 (1.04–1.16)	+ 1.45 (1.03–2.05)
Summer Season (Sunlight)	European (340, 24)	+ 1.08 (1.02–1.15)	++ 1.11 (1.03–1.19)	1.02 (0.90–1.16)	0.86 (0.38–1.96)
	Asian (132, 13)	0.93 (0.82–1.06)	0.97 (0.85–1.10)	0.90 (0.73–1.10)	0.32 (0.04–2.63)
	Other/Mixed (63, 5)	1.03 (0.87–1.22)	1.06 (0.88–1.29)	0.93 (0.65–1.35)	0.00 (0.00-Inf)
	All (535, 42)	1.04 (0.99–1.09)	1.06 (0.99–1.12)	0.99 (0.90–1.10)	0.68 (0.34–1.35)
Medications	European (340, 24)	0.98 (0.93–1.04)	0.97 (0.91–1.04)	1.01 (0.89–1.15)	1.39 (0.63–3.06)
	Asian (140, 5)	0.96 (0.81–1.15)	1.10 (0.91–1.31)	+ 0.63 (0.42–0.96)	0.00 (0.00-Inf)
	Other/Mixed (64, 4)	1.06 (0.89–1.26)	1.05 (0.86–1.28)	1.10 (0.79–1.53)	+ 17.06 (1.25–232.19)
	All (544, 33)	0.99 (0.94–1.05)	1.00 (0.94–1.06)	0.99 (0.89–1.10)	1.64 (0.84–3.20)

Table 5 Effects of PRS on co-morbidities present in psoriasis patients. P-values were calculated using a logistic regression model adjusted for age, sex, and smoking covariates. Cells with bolded values indicate significant p-values (+ if $p < 0.05$)

Co-morbidity	Ethnicity (n = unchecked, checked)	PRS-ALL OR (95% CI)	PRS-NoHLA OR (95% CI)	PRS-HLA OR (95% CI)	HLA-C*06:02 OR (95% CI)
High Blood Pressure	European (275, 89)	1.00 (0.97–1.03)	1.01 (0.98–1.05)	+ 0.93 (0.88–0.99)	+ 0.57 (0.33–0.99)
	Asian (96, 49)	0.98 (0.95–1.02)	1.00 (0.95–1.04)	0.93 (0.86–1.01)	1.05 (0.42–2.65)
	Other/Mixed (49, 19)	1.04 (0.96–1.12)	1.04 (0.97–1.12)	1.00 (0.88–1.13)	1.10 (0.25–4.97)
	All (420, 157)	1.09 (0.96–1.23)	1.15 (0.98–1.34)	0.96 (0.74–1.23)	+ 0.61 (0.40–0.95)
High Cholesterol	European (274, 90)	0.99 (0.96–1.02)	0.99 (0.96–1.03)	0.97 (0.91–1.03)	1.11 (0.66–1.86)
	Asian (108, 37)	0.98 (0.95–1.02)	0.97 (0.93–1.01)	1.01 (0.93–1.09)	0.44 (0.13–1.51)
	Other/Mixed (56, 12)	1.04 (0.96–1.13)	1.06 (0.97–1.15)	0.96 (0.84–1.11)	0.46 (0.08–2.81)
	All (438, 139)	1.04 (0.91–1.18)	1.14 (0.96–1.34)	0.77 (0.55–1.07)	0.86 (0.55–1.32)
Stroke	European (358, 6)	0.96 (0.88–1.04)	0.98 (0.89–1.08)	0.87 (0.71–1.05)	0.42 (0.05–3.82)
	Asian (142, 3)	0.93 (0.83–1.04)	0.91 (0.80–1.03)	0.97 (0.75–1.27)	0.00 (0.00-Inf)
	Other/Mixed (64, 4)	0.89 (0.68–1.18)	1.34 (0.87–2.07)	0.00 (0.00-Inf)	0.00 (0.00-Inf)
	All (564, 13)	1.04 (0.86–1.26)	1.04 (0.84–1.29)	1.04 (0.70–1.55)	0.21 (0.03–1.68)
Eczema	European (357, 7)	0.94 (0.86–1.02)	0.96 (0.87–1.07)	0.83 (0.67–1.02)	0.00 (0.00-Inf)
	Asian (142, 3)	0.92 (0.83–1.02)	0.95 (0.84–1.07)	+ 0.71 (0.53–0.97)	2.03 (0.17–24.41)
	Other/Mixed (67, 1)	1.08 (0.85–1.37)	1.06 (0.83–1.34)	1.05 (0.72–1.51)	0.00 (0.00-Inf)
	All (566, 11)	0.89 (0.60–1.32)	0.75 (0.39–1.45)	1.10 (0.55–2.23)	0.19 (0.02–1.50)
Metabolic Syndrome	European (335, 29)	1.00 (0.96–1.04)	1.02 (0.97–1.07)	0.94 (0.86–1.03)	0.89 (0.39–2.02)
	Asian (131, 14)	0.96 (0.91–1.01)	0.95 (0.89–1.02)	0.96 (0.85–1.09)	1.25 (0.31–5.00)
	Other/Mixed (59, 9)	+ 1.15 (1.01–1.31)	+ 1.17 (1.02–1.34)	0.99 (0.82–1.19)	0.35 (0.04–3.54)
	All (525, 52)	+ 1.18 (1.00–1.39)	+ 1.30 (1.04–1.61)	0.97 (0.72–1.30)	0.77 (0.40–1.46)

Table 6 Effects of PRS on psoriasis treatment response. P-values were calculated using a logistic regression model adjusted for age, sex, and smoking covariates. For certain analyses marked with an *, smoking was taken out as a covariate due to no presence of smokers in the data for that specific treatment and ethnic group. Cells with bolded values indicate significant p-values < 0.05 , (+ if $p < 0.05$, ++ if $p < 0.01$)

Treatment	Ethnicity (n = Non, Resp)	PRS-ALL OR (95% CI)	PRS-NoHLA OR (95% CI)	PRS-HLA OR (95% CI)	HLA-C*06:02 OR (95% CI)
Narrowband UVB	European (10, 114)	1.01 (0.91–1.11)	0.96 (0.86–1.07)	1.30 (0.99–1.69)	1.93 (0.51–7.24)
	Asian (9, 61)	0.99 (0.85–1.15)	0.90 (0.76–1.06)	1.25 (0.96–1.62)	2.22 (0.24–20.80)
	*Other/Mixed (1, 21)	5.40 (0.00-Inf)	1.48 (0.33–6.63)	2.75 (0.00-Inf)	4.52 (0.00-Inf)
	All (20, 196)	1.01 (0.94–1.09)	0.95 (0.88–1.04)	++ 1.26 (1.06–1.50)	2.22 (0.77–6.39)
UVB Treatments (Broadband, Narrowband, Other)	European (22, 175)	1.05 (0.98–1.12)	1.04 (0.97–1.11)	1.12 (0.96–1.31)	1.51 (0.62–3.70)
	Asian (17, 91)	0.95 (0.85–1.06)	0.88 (0.78–0.99)	1.21 (1.00–1.46)	2.14 (0.43–10.59)
	Other/Mixed (5, 33)	1.08 (0.90–1.29)	1.03 (0.84–1.27)	1.22 (0.84–1.77)	3.40 (0.30–38.06)
	All (44, 299)	1.03 (0.98–1.08)	0.99 (0.94–1.05)	+ 1.16 (1.04–1.30)	1.90 (0.94–3.85)
PUVA	European (10, 49)	1.01 (0.91–1.10)	0.99 (0.89–1.10)	1.05 (0.85–1.30)	2.40 (0.55–10.58)
	*Asian (6, 23)	+ 0.73 (0.55–0.96)	0.39 (0.15–1.01)	1.09 (0.78–1.53)	4.01 (0.00-Inf)
	*Other/Mixed (3, 7)	1.06 (0.89–1.26)	0.99 (0.79–1.24)	1.70 (0.72–4.02)	4.75 (0.00-Inf)
	All (19, 79)	0.97 (0.91–1.04)	0.93 (0.85–1.01)	1.12 (0.96–1.32)	4.41 (1.12–17.32)

“Responder” and “Non-Responder” (Table 6). The “Responder” outcome was assigned to patients who self-reported either a slightly better or much better response to a treatment. The “Non-Responder” outcome was assigned to patients who self-reported no effect or a worse response to a treatment.

PRS-HLA was associated with a positive response to Narrowband UVB treatment and Combined UVB treatments in the combined cohort. PRS-NoHLA was negatively associated with a positive response to PUVA treatment, primarily in the Asian cohort. The

HLA-C*06:02 allele did not show any significant associations for either of these treatments.

Discussion

There are few studies that explore the association of psoriasis PRS with comprehensive patient characteristics, and there are no studies looking at PRS across different ethnicities. In this study we evaluated PRS-ALL, PRS-noHLA, PRS-HLA, and HLA-C*06:02 on age of onset, psoriatic arthritis, psoriasis body location, psoriasis

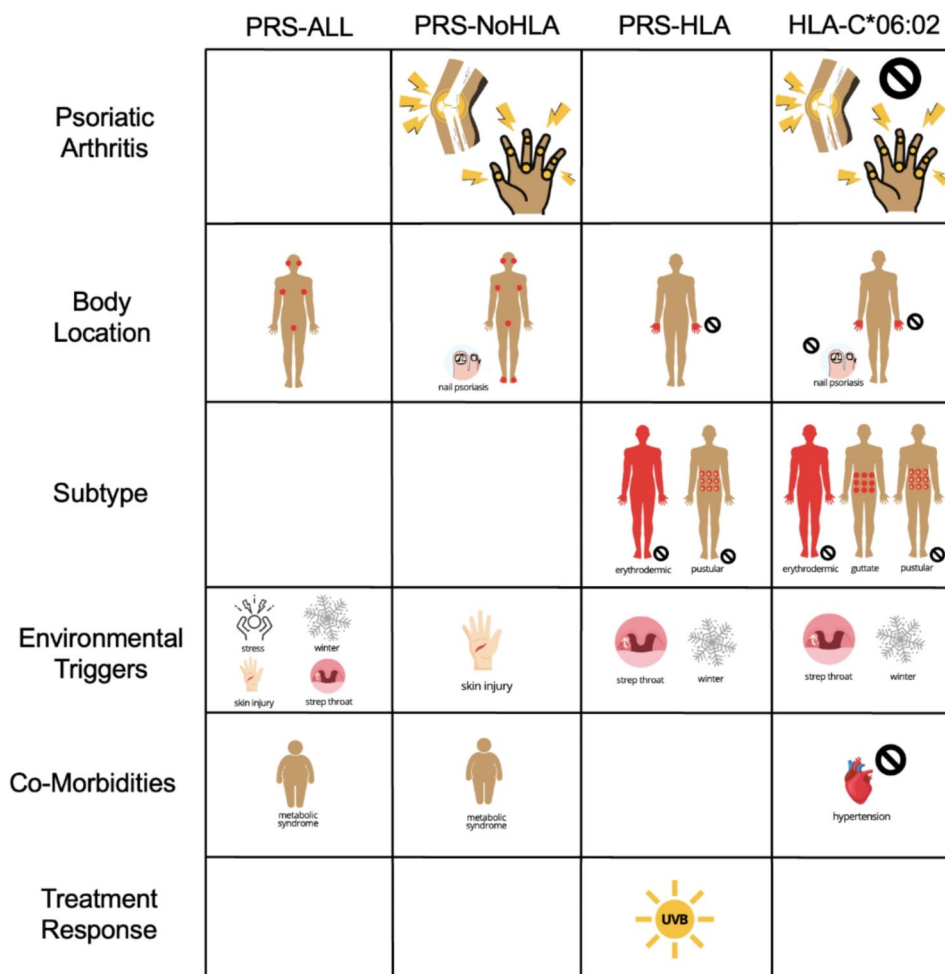


Fig. 3 Logistic regression summary of significant PRS associations across several clinical phenotypes in the combined cohort. For body location, red spots indicate an association at the respective location, with the exception of nail psoriasis which is shown zoomed in and on the bottom left. Psoriasis subtypes were represented with individually labelled body figures. PRS associations with psoriatic arthritis, environmental triggers, co-morbidities, and treatment response were represented with simple images. Red spots or images with a black cross represent a protective effect (OR < 1) for that specific phenotype, and images without a black cross represent a driving effect

subtype, psoriasis environmental triggers, co-morbidities, and treatment response in different racial groups.

For age of onset, we found that the European and Asian cohorts had a consistent decreasing trend across PRS-ALL quartiles. Furthermore, HLA SNPs may be driving this trend primarily for the European cohort. This agrees with previous published findings [21–25]. We did not see this trend for HLA SNPs in our Asian cohort. However, a study which calculated a 14-loci PRS on a Han Chinese cohort did find that their group with a high-risk PRS-HLA had a significantly earlier age of onset than their low-risk group [26]. While we did not find PRS-HLA to associate with age of onset in our Asian cohort, we did find that *HLA-C*06:02* was associated with lower age of onset in our Asian cohort (Additional file 3: Figure S2). Moreover, the HLA-PRS we calculated for our Asian cohort used a set of psoriasis susceptibility loci identified

from a European population which could contribute to this discrepancy.

Our PsA results indicate that non-HLA SNPs are driving PsA, primarily in the European cohort. Previous studies have identified up to 50 non-HLA susceptibility genes of PsA in various European cohorts, many of which are inflammation-related genes that activate or inhibit signaling from *IL23A*, *TNIP1*, *ERAP1*, *ERAP2*, *IL12B* [27]. A mean comparison t-test did reveal that Asian patients with confirmed PsA had significantly higher PRS-NoHLA scores than Asian patients without PsA. One study in a Chinese cohort found six non-HLA psoriasis susceptibility loci that were significantly associated with PsA [28]. The candidate genes for these loci were *TNIP1*, *IL28RA*, *IL12B*, *ERAP1*, *PTTG1*, and *GJB2*. Another study that used a different Chinese PsA cohort confirmed three non-HLA susceptibility loci. The candidate genes for these loci were *IL12B*, *RUNX3*, and *LCE*

[29]. We also found that *HLA-C*06:02* specific SNPs may be protective against PsA in our combined cohort. This is consistent with findings from a previous study done on a European cohort, which found that PsA was observed less frequently in *HLA-C*06:02*-positive patients compared to *HLA-C*06:02*-negative patients [30]. A previous study done on a Han Chinese population found no significant difference between *HLA-C*06:02*-negative and -positive patients regarding PsA [31].

Our findings on psoriasis body location for the European cohort indicated that HLA SNPs were primarily driving psoriasis on the scalp. The association between HLA SNPs and scalp psoriasis is still unclear. Findings for our Asian cohort showed that HLA SNPs may be protective against psoriasis on the genitals, nails, and palms. A study done in a Han Chinese population showed that palmoplantar pustulosis was observed in *HLA-C*06:02*-negative patients [31]. Our result showing that HLA SNPs may be protective against genital psoriasis in an Asian cohort is a novel finding. Our findings also showed that non-HLA SNPs were driving psoriasis on the genitals, skin folds, nails, ears, and soles of feet, primarily in the European cohort. Non-HLA SNPs also seemed to drive psoriasis on the face, primarily in the Other/Mixed cohort. These findings are novel, as currently there are a lack of studies investigating the role of non-HLA genetic factors on these body locations.

Our psoriasis subtype results showed that *HLA-C*06:02* was driving guttate psoriasis in the combined cohort. This is consistent with previous studies which found that guttate psoriasis was more frequent in *HLA-C*06:02*-positive patients [14, 23, 30]. Results also indicated that HLA SNPs were protective for pustular and erythrodermic psoriasis in the combined cohort. Prior studies have found that *HLA-C*01:02*-positivity has been associated with a higher frequency of erythrodermic psoriasis in a Chinese cohort and higher frequency of pustular psoriasis in a Japanese cohort [32, 33]. We did not specifically examine *HLA-C*01:02* in our cohorts. We also found that non-HLA SNPs may be driving plaque psoriasis, primarily in our Asian cohort.

The interaction between environmental triggers and genetic susceptibility is not well understood. Our data showed that for almost all significant associations between PRS and environmental triggers, they had an $OR > 1.0$. This indicates that HLA and non-HLA SNPs may be driving certain environmental factors as triggers for psoriasis. Various studies have reported *HLA-C*06:02* to be associated with strep throat, which is consistent with our findings [14–16]. Two studies did not find a significant difference between *HLA-C*06:02*-positive and negative patients regarding psoriasis exacerbation during stress, which stands in contrast with our findings [14, 31]. One of those studies also found that

*HLA-C*06:02*-positive patients had a higher incidence of Koebner's phenomenon, which describes the appearance of new skin lesions in the same area where a skin injury occurred [14]. This conflicts with our results in which we found no significant association between *HLA-C*06:02* and skin injury as a trigger. Instead, we found a significant association with non-HLA SNPs with skin injury, primarily in European patients. This could be due to a difference in cohorts. Gudjonsson et al.'s cohort was comprised of only Icelandic patients; therefore, their cohort is more genetically isolated than our cohort of patients from UCSF. Their cohort also had a higher proportion of *HLA-C*06:02*-positive patients ($654/1019=0.64$) than our cohort ($221/607=0.36$). Furthermore, their *HLA-C*06:02*-positive patients with a late age of onset were associated with mild psoriasis, while their *HLA-C*06:02*-negative patients with a late age of onset were associated with more severe psoriasis. We observed the opposite pattern in our combined and European *HLA-C*06:02*-negative cohorts (Additional file 3: Figure S4). Our result showing HLA SNPs driving winter season as an environmental trigger in non-European patients is a novel finding.

Many studies on psoriasis cardiometabolic comorbidities have focused mainly on its relationship with the *HLA-C*06:02* allele. *HLA-C*06:02*-positive status is often associated with lower central adiposity, lower incidence of hypertension, and a lower prevalence of other cardiometabolic comorbidities [30, 34, 35]. This was consistent with one of our *HLA-C*06:02* results, which was found to be protective against high blood pressure. Our results also showed that HLA SNPs were protective against eczema primarily in our Asian cohort. Our results also showed that non-HLA SNPs are associated with metabolic syndrome in Other/Mixed ethnicities.

Our results for treatment response indicate that PRS-ALL is associated with "No Response" to PUVA treatment in our Asian cohort. However, this finding did result from a small sample size ($n < 25$). Our results also showed that HLA SNPs are associated with positive response to Narrowband UVB (NB-UVB). NB-UVB had the same direction of effect for *HLA-C*06:02* (but non-significant). In contrast, another study found that *HLA-C*06:02*-positive patients experienced reduced effectiveness with NB-UVB therapy [36]. This conflicting result could be due to a difference in cohorts. Bojko et al. analyzed a cohort of 306 Polish Caucasian psoriasis patients. Their cohort also had a higher proportion of *HLA-C*06:02*-positive patients ($181/306=0.59$) than our cohort ($221/607=0.36$).

There were a number of limitations within our study including using a limited number of disease associated variants, limited transferability of PRS in difference ethnicities, and limited clinical variables. Since we only used

a certain number of variants in our PRS calculations, our scores are not able to explain total disease heritability. Furthermore, there is a dearth of psoriasis GWAS studies done on non-European populations other than East Asians. Therefore, it is not fully known whether common disease associated variants identified in European populations are transferable to non-European populations, although one trans-ethnic meta-analysis suggested considerable overlap [37]. Future methods that can be used to deal with this limitation include re-calculation of PRS on full summary statistics and using more robust methods such as PRS-CSx and PTRS [38, 39]. Our patient data also does not include information on change in PASI, diet, and allergies. These are topic of interests that can hopefully be covered in future studies.

In conclusion, the results of this study showed that PRS have significant associations with a large number of psoriasis clinical phenotypes (Fig. 3), and these associations can show different results for different ethnicities. We would like to highlight the importance of several identified non-HLA associations, which differs from the focus on HLA associations in the literature. Non-HLA SNPs were associated with PsA in our European and Asian cohorts. Also, non-HLA SNPs drove the presence of psoriasis on the genitals, skin folds, nails, ears, and soles of feet, primarily in European patients. Non-HLA SNPs was associated with skin injury (Koebner phenomenon) as a trigger for psoriasis, primarily in European patients. Finally, non-HLA SNPs were associated with metabolic syndrome, primarily in non-European, non-Asian ethnicities. This study advances our knowledge of psoriasis endotypes, wherein genetic factors influence how psoriatic disease presents, is triggered, and responds to therapy.

Supplementary Information

The online version contains supplementary material available at <https://doi.org/10.1186/s12967-024-05591-z>.

Supplementary Material 1
Supplementary Material 2
Supplementary Material 3

Acknowledgements

We would like to thank all of the psoriasis patients who participated in this study.

Author contributions

FO analyzed the data and wrote the manuscript with help from WL and SK. SK and JL performed the data processing. AB assisted with methods development. CJ contributed to data representation and the generation of figures. ZH conducted experiments and collected the data. WL conceived the original idea and supervised the study.

Funding

No funding sources were used for this manuscript.

Data availability

The datasets analyzed during the current study are not publicly available due to genetic privacy protections but are available from the corresponding author upon reasonable request.

Declarations

Ethical approval

All research subjects provided written informed consent for this study under UCSF IRB#10-02830.

Consent for publication

All authors have consented to publication of this research.

Competing interests

W.L. has received research grant funding from Abbvie, Amgen, Janssen, Leo, Novartis, Pfizer, Regeneron, and TRex Bio. The other authors declare that the research was conducted in the absence of any commercial or financial relationships that could be construed as a potential conflict of interest.

Received: 5 April 2024 / Accepted: 7 August 2024

Published online: 11 September 2024

References

- Rachakonda TD, Schupp CW, Armstrong AW. Psoriasis prevalence among adults in the United States. *J Am Acad Dermatol*. 2014;70(3):512–6.
- Griffiths CE, Barker JN. Pathogenesis and clinical features of psoriasis. *Lancet*. 2007;370(9583):263–71.
- Gladman DD. Psoriatic arthritis. *Dermatol Ther*. 2009;22(1):40–55.
- Yan D, Blauvelt A, Dey AK, Golpanian RS, Hwang ST, Mehta NN, et al. New frontiers in Psoriatic Disease Research, Part II: comorbidities and targeted therapies. *J Invest Dermatol*. 2021;141(10):2328–37.
- Liu L, Lin NX, Yu YT, Wang SH, Wang J, Cai XC, et al. Epidemiology of mental health comorbidity in patients with psoriasis: an analysis of trends from 1986 to 2019. *Psychiatry Res*. 2023;321:115078.
- Armstrong AW, Harskamp CT, Armstrong EJ. Psoriasis and the risk of diabetes mellitus: a systematic review and meta-analysis. *JAMA Dermatol*. 2013;149(1):84–91.
- Chung M, Liu J, Yeroushalmi S, Bartholomew E, Hakimi M, Gensler LS, et al. The association of psoriasis with rheumatic diseases: a national cross-sectional study. *J Am Acad Dermatol*. 2023;89(6):1259–61.
- Garshick MS, Ward NL, Krueger JG, Berger JS. Cardiovascular Risk in patients with psoriasis: JACC Review topic of the Week. *J Am Coll Cardiol*. 2021;77(13):1670–80.
- Liu L, Cai XC, Sun XY, Zhou YQ, Jin MZ, Wang J, et al. Global prevalence of metabolic syndrome in patients with psoriasis in the past two decades: current evidence. *J Eur Acad Dermatol Venereol*. 2022;36(11):1969–79.
- Wu JJ, Nguyen TU, Poon KY, Herrinton LJ. The association of psoriasis with autoimmune diseases. *J Am Acad Dermatol*. 2012;67(5):924–30.
- Jin JQ, Wu D, Spencer R, Elhage KG, Liu J, Davis M, et al. Biologic insights from single-cell studies of psoriasis and psoriatic arthritis. *Expert Opin Biol Ther*. 2022;22(12):1449–61.
- Lonnberg AS, Skov L, Skytthe A, Kyvik KO, Pedersen OB, Thomsen SF. Heritability of psoriasis in a large twin sample. *Br J Dermatol*. 2013;169(2):412–6.
- Tsoi LC, Stuart PE, Tian C, Gudjonsson JE, Das S, Zawistowski M, et al. Large scale meta-analysis characterizes genetic architecture for common psoriasis associated variants. *Nat Commun*. 2017;8:15382.
- Gudjonsson JE, Karason A, Runarsdottir EH, Antonsson AA, Hauksson VB, Jonsson HH, et al. Distinct clinical differences between HLA-Cw*0602 positive and negative psoriasis patients—an analysis of 1019 HLA-C- and HLA-B-typed patients. *J Invest Dermatol*. 2006;126(4):740–5.
- Haapasalo K, Koskinen LLE, Suvilehto J, Jousilahti P, Wolin A, Suomela S et al. The Psoriasis Risk Allele HLA-C*06:02 Shows Evidence of Association with chronic or recurrent streptococcal Tonsillitis. *Infect Immun*. 2018;86(10).
- Mallbris L, Wolk K, Sanchez F, Stahle M. HLA-Cw*0602 associates with a twofold higher prevalence of positive streptococcal throat swab at the onset of psoriasis: a case control study. *BMC Dermatol*. 2009;9:5.

17. Chang CC, Chow CC, Tellier LC, Vattikuti S, Purcell SM, Lee JJ. Second-generation PLINK: rising to the challenge of larger and richer datasets. *Gigascience*. 2015;4:7.
18. Chen SF, Dias R, Evans D, Salfati EL, Liu S, Wineinger NE, et al. Genotype imputation and variability in polygenic risk score estimation. *Genome Med*. 2020;12(1):100.
19. Goldstein BA, Yang L, Salfati E, Assimes TL. Contemporary considerations for constructing a genetic risk score: an empirical Approach. *Genet Epidemiol*. 2015;39(6):439–45.
20. Machiela MJ, Chanock SJ. LDlink: a web-based application for exploring population-specific haplotype structure and linking correlated alleles of possible functional variants. *Bioinformatics*. 2015;31(21):3555–7.
21. Bui A, Kumar S, Liu J, Orcales F, Gulliver S, Tsoi LC, et al. A partitioned 88-loci psoriasis genetic risk score reveals HLA and non-HLA contributions to clinical phenotypes in a Newfoundland psoriasis cohort. *Front Genet*. 2023;14:1141010.
22. Enerback C, Martinsson T, Inerot A, Wahlstrom J, Enlund F, Yhr M, et al. Evidence that HLA-Cw6 determines early onset of psoriasis, obtained using sequence-specific primers (PCR-SSP). *Acta Derm Venereol*. 1997;77(4):273–6.
23. Gudjonsson JE, Karason A, Antonsdottir AA, Runarsdottir EH, Gulcher JR, Stefansson K, et al. HLA-Cw6-positive and HLA-Cw6-negative patients with psoriasis vulgaris have distinct clinical features. *J Invest Dermatol*. 2002;118(2):362–5.
24. Schmitt-Egenolf M, Boehncke WH, Stander M, Eiermann TH, Sterry W. Oligonucleotide typing reveals association of type I psoriasis with the HLA-DRB1*0701/2, -DQA1*0201, -DQB1*0303 extended haplotype. *J Invest Dermatol*. 1993;100(6):749–52.
25. Schmitt-Egenolf M, Eiermann TH, Boehncke WH, Stander M, Sterry W. Familial juvenile onset psoriasis is associated with the human leukocyte antigen (HLA) class I side of the extended haplotype Cw6-B57-DRB1*0701-DQA1*0201-DQB1*0303: a population- and family-based study. *J Invest Dermatol*. 1996;106(4):711–4.
26. Yin X, Cheng H, Lin Y, Wineinger NE, Zhou F, Sheng Y, et al. A weighted polygenic risk score using 14 known susceptibility variants to estimate risk and age onset of psoriasis in Han Chinese. *PLoS ONE*. 2015;10(5):e0125369.
27. Chen J, Yuan F, Fan X, Wang Y. Psoriatic arthritis: a systematic review of non-HLA genetic studies and important signaling pathways. *Int J Rheum Dis*. 2020;23(10):1288–96.
28. Yang Q, Liu H, Qu L, Fu X, Yu Y, Yu G, et al. Investigation of 20 non-HLA (human leucocyte antigen) psoriasis susceptibility loci in Chinese patients with psoriatic arthritis and psoriasis vulgaris. *Br J Dermatol*. 2013;168(5):1060–5.
29. Zhang Z, Yuan J, Tian Z, Xu J, Lu Z. Investigation of 36 non-HLA (human leucocyte antigen) psoriasis susceptibility loci in a psoriatic arthritis cohort. *Arch Dermatol Res*. 2017;309(2):71–7.
30. Douroudis K, Ramessur R, Barbosa IA, Baudry D, Duckworth M, Angit C, et al. Differences in clinical features and Comorbid Burden between HLA-C*06:02 carrier groups in > 9,000 people with psoriasis. *J Invest Dermatol*. 2022;142(6):1617–e2810.
31. Fan X, Yang S, Sun LD, Liang YH, Gao M, Zhang KY, et al. Comparison of clinical features of HLA-Cw*0602-positive and -negative psoriasis patients in a Han Chinese population. *Acta Derm Venereol*. 2007;87(4):335–40.
32. Lo Y, Chiu HY, Tsai TF. Clinical features and genetic polymorphism in Chinese patients with erythrodermic psoriasis in a single dermatologic clinic. *Mol Diagn Ther*. 2020;24(1):85–93.
33. Ozawa A, Miyahara M, Sugai J, Iizuka M, Kawakubo Y, Matsuo I, et al. HLA class I and II alleles and susceptibility to generalized pustular psoriasis: significant associations with HLA-Cw1 and HLA-DQB1*0303. *J Dermatol*. 1998;25(9):573–81.
34. Queiro R, Coto-Segura P, Brana I, Pino M, Burger S. Potential differences in the Cardiometabolic Risk Profile of patients with Psoriatic Disease according to their HLA-C*06 status. *Biomed Res Int*. 2022;2022:1451193.
35. Solvin AO, Bjarko VV, Thomas LF, Berrosipi P, Hveem K, Saunes M, et al. Body composition, cardiometabolic risk factors and comorbidities in Psoriasis and the Effect of HLA-C*06:02 status: the HUNT study, Norway. *Acta Derm Venereol*. 2023;103:adv5209.
36. Bojko A, Ostasz R, Bialecka M, Klimowicz A, Malinowski D, Budawski R, et al. IL12B, IL23A, IL23R and HLA-C*06 genetic variants in psoriasis susceptibility and response to treatment. *Hum Immunol*. 2018;79(4):213–7.
37. Yin X, Low HQ, Wang L, Li Y, Ellinghaus E, Han J, et al. Genome-wide meta-analysis identifies multiple novel associations and ethnic heterogeneity of psoriasis susceptibility. *Nat Commun*. 2015;6:6916.
38. Liang Y, Pividori M, Manichaikul A, Palmer AA, Cox NJ, Wheeler HE, et al. Polygenic transcriptome risk scores (PTRS) can improve portability of polygenic risk scores across ancestries. *Genome Biol*. 2022;23(1):23.
39. Ruan Y, Lin YF, Feng YA, Chen CY, Lam M, Guo Z, et al. Improving polygenic prediction in ancestrally diverse populations. *Nat Genet*. 2022;54(5):573–80.

Publisher's Note

Springer Nature remains neutral with regard to jurisdictional claims in published maps and institutional affiliations.